

*Joint Master's Degree in Port
Management and Logistics*

MIPMAL

Student Handbook

(Version March 2025)

sea·EU

EUROPEAN UNIVERSITY OF THE SEAS

Table of contents

*We must trust the Sea to guide us
to a safe harbour!*

Homer, *The Odyssey*



University of Cadiz
(Spain)



University of Split
(Croatia)



University of Gdansk
(Poland)



University of Malta
(Malta)



University of Algarve
(Portugal)

Foreword

MIPMAL welcomes You!

1

Introduction

What is SEA-EU?

Why Study the Joint Master **MIPMAL?**

Who is the Target Audience?

Where to Study?

When?

2

Study Programme

MIPMAL at a glance!

1. Learning Approach
2. Purpose of the Programme
3. Curricula
4. Research Track
 - a) Internships + Dissertation
 - b) Dissertation
5. Mobility
6. Assessment Methods
7. Grading System
8. Joint Diploma Issue

Future Jobs

Table of contents

3 **General Procedures, Rights & Responsibilities**
Application, Admission & Enrolment
Fees & Scholarships
Onsite & Online Learning Conditions
Coursework Submission Procedure
Re-sits & Re-assessment
Joint Degree & Diploma Supplement

4 **Supporting Services**
Visa & Permit for Non-EU Candidates
Green Travel
Accommodation
Health Insurance
SEA-EU Buddy System
Linguistic Support
Equal Opportunities
Diversity
People with Disabilities
Gender Equality
Psycho-pedagogical Help

This handbook is available on the SEA-EU web page as well as on other SEA-EU online platforms

Table of contents

5 **SEA-EU Academic Life**
Welcome Week/Sessions
SEA-EU Campuses' Facilities
Library Services
Computer Services
Sports
Cultural Activities
SEA-EU Graduates
SEA-EU Ombudsperson

6 **Key Students Contacts at:**
UCA, Spain
UNIST, Croatia
UG, Poland
UM, Malta
UAlg, Portugal





Foreword

Dear students,
the purpose of this handbook is to provide you with detailed information on the regulations of the Joint Master Programme in Port Management and Logistics (MIPMAL), coordinated by the University of Cadiz (Spain, UCA) and delivered by the SEA-EU partners: University of Split (Croatia, UNIST); University of Gdansk (Poland, UG); University of Malta (Malta, UM); and, University of Algarve (Portugal, UAlg).

This will serve to guide you, as a student interested in MIPMAL, from the moment you apply for admission to the moment you receive your joint Diploma. This document provides an overview of the programme's main objectives and course structure, as well as the current regulations regarding the academic courses, internships, and the Master's dissertation.

We hope you achieve tremendous success in your studies! May your time at university be both delightful and fulfilling!

All hands on deck!

MIPMAL Consortium

Disclaimer: To avoid this document becoming out of date, links to other documents containing more detailed information on each subject will be included. Contact your local technical officer to ask for any more information about any of the points talked about in the handbook and they will be happy to advise you.

MIPMAL welcomes You!

Welcome to the Joint Master in Port Management and Logistics! We are thrilled to have you join our vibrant community of scholars and professionals. This programme is designed to equip you with the skills, knowledge, and expertise necessary to excel in the dynamic and ever-evolving fields of port management and logistics.

Throughout your studies, you will engage with cutting-edge research, participate in hands-on projects, and collaborate with industry experts. Our distinguished faculties and comprehensive curriculum are here to support you in achieving academic excellence and professional growth.

We encourage you to fully embrace the diverse opportunities available, from internships and networking events to workshops and seminars. Your time here will not only enhance your academic and professional skills but also enrich your personal development.

May your journey in this programme be intellectually stimulating, deeply rewarding, and filled with memorable experiences.

Welcome aboard, and we wish you every success in your studies and future endeavours!





1

Introduction

- What is SEA-EU?**
- Why** study the Joint Master **MIPMAL**?
- Who** is the target audience??
- Where** to study?
- When?**

What

... is SEA-EU?

SEA-EU is a geographically-balanced and enlarged university alliance with a coastal and marine-maritime character as its hallmark. It aims to foster a cohesive and innovative educational ecosystem, leveraging the collective strengths and resources of its member universities to enhance European higher education and create impactful opportunities for all its stakeholders. Three specific objectives are key on the SEA-EU alliance:

1

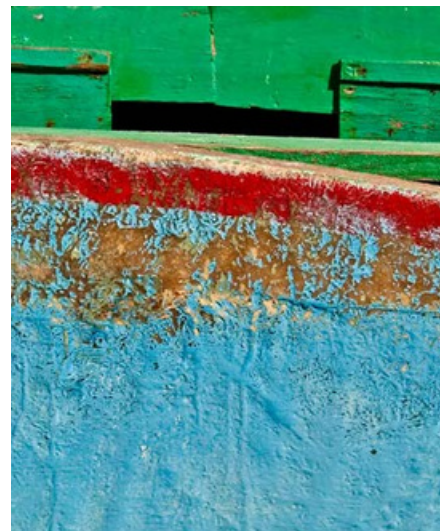
#Develop and implement an **integrated long-term joint strategy**

2

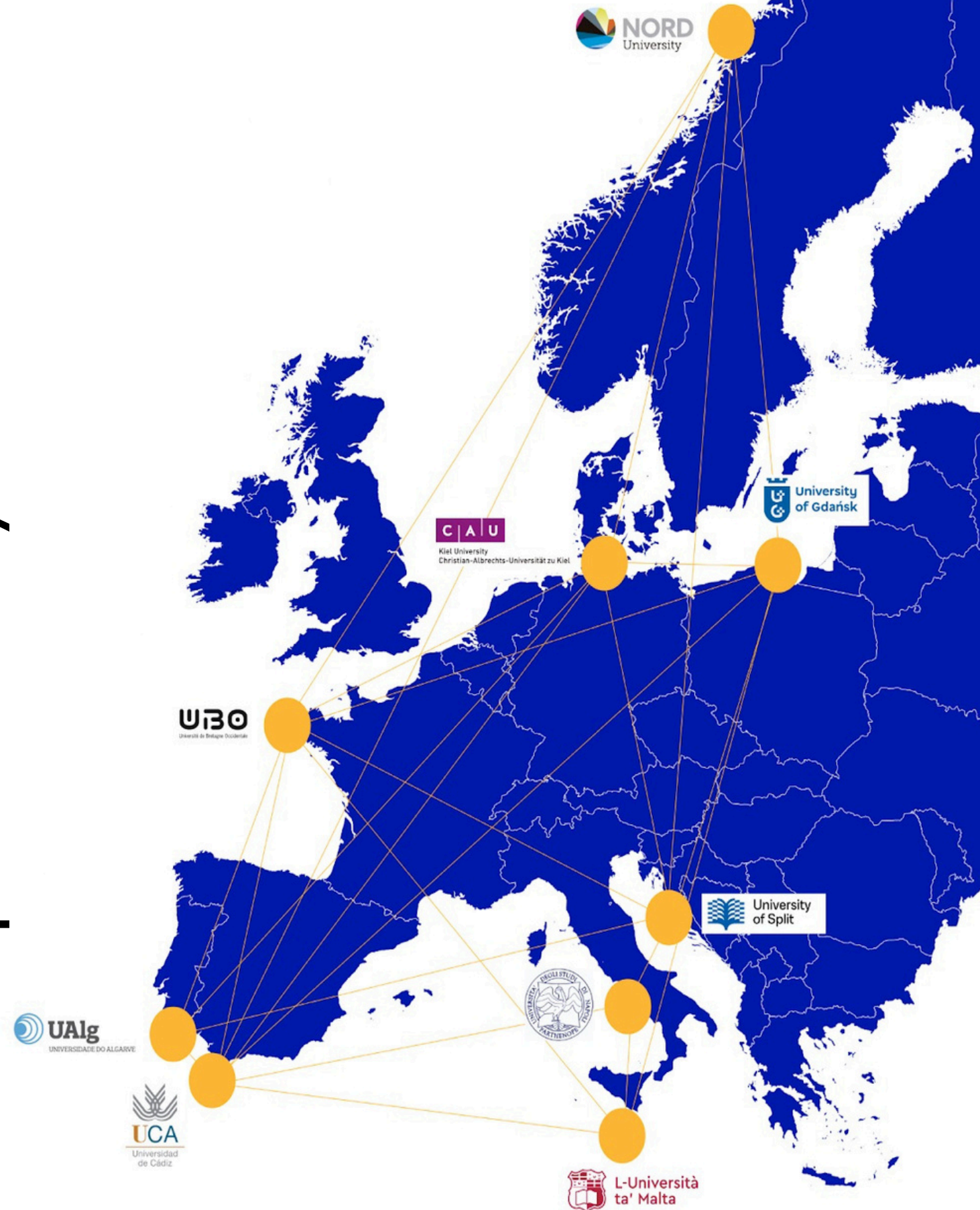
#Establish a **European higher education inter-university 'campus'**

3

#Build solid **European knowledge-creating teams**



The European University of the Seas "SEA-EU"



Why

... study the Joint Master in Port Management and Logistics?

Ports are vital to today's world, requiring a strong base of knowledge, skills, and experience from those involved professionally and socially. Optimal trade management is key to enhancing global competitiveness, with maritime transport and logistics being crucial facilitators of the supply chain and economic activity. New demands from customers necessitate the development of modern, sustainable transport systems. A truly multimodal transport system is essential to meet the growing needs of various logistics chains efficiently and sustainably.

The MIPMAL programme addresses the labour market demand for specialised professionals with an official international university degree offered by five European universities: Cadiz, Gdansk, Malta, Split, and Algarve. The programme trains professionals with the following characteristics:

- Skills in port management and maritime port operations.
- Ability to integrate logistics processes in digital environments.
- Competence in integrating logistics activities with procurement, production, distribution, transport, storage, sales, and after-sales services.
- Vision for sustainability and energy transition in ports.

Master
In
Port
Management
And
Logistics



Who

... is the target audience?

The objectives of this Master's degree respond to a labour market demand for a very specific specialisation profile, focused on the international market.

The objective was to design a master's degree in English that would give rise to a profile with great projection in the international market of the maritime, port and logistics sector. In short, a programme focused on the training of international professionals with the following characteristics:

- Professionals who incorporate competencies in simulation and transport modelling in the logistics chain as a whole, focusing on the port phase.
- Professionals with training to integrate logistics processes in digital environments.
- Professionals with the ability to interrelate logistics activities in the port phase, globally integrating legal, management, and economic analysis tools.
- Professional with a vision on sustainability and energy transition.





Where

... to study?

Five Universities of the SEA-EU Alliance participate in the MIPMAL consortium. These five universities are part of the European University of the Seas (SEA-EU), one of the 65 European Universities that will become the transnational universities of the future. The five Universities that have co-created the master programme are:

- University of Cadiz (Spain). Coordinating institution
- University of Split (Croatia)
- University of Gdansk (Poland)
- University of Malta (Malta)
- University of Algarve (Portugal)

When

Starting academic year 2025/2026

Algeciras (Cadiz - Spain). The South of Europe

Situated at the southernmost point of mainland Europe, is a bustling port city in Spain's Andalusian region. As one of the largest ports in Europe, it serves as a critical hub for maritime traffic between the Mediterranean and the Atlantic Ocean. The Port of Algeciras is renowned for its extensive cargo operations, accommodating both container and bulk shipping, and is a pivotal gateway for trade between Europe, Africa, and the Americas.

The city's strategic location at the Strait of Gibraltar provides it with a unique geopolitical significance, facilitating the movement of goods and passengers across continents. Algeciras is not only a centre for commercial shipping but also plays a vital role in the ferry services connecting Spain with North Africa. Its modern infrastructure and efficient port facilities make it an essential node in global logistics and maritime transport networks.

Beyond its port activities, Algeciras boasts a rich cultural heritage and a vibrant local economy, contributing to its status as a dynamic and influential city in southern Europe.

The Campus

The offer of the University of Cadiz in this Campus covers different fields of knowledge, many of them closely related to the environment where it is located.

Algeciras is a point of union between two continents and they take advantage of its privileged location, strengthening and leading the academic and scientific cooperation with universities from different North African countries through the accredited activity that is deployed from the Aula Universitaria del Estrecho.

In this area you will find the Alcornocales Nature Reserve, one of the largest in Andalusia, of great scenic and ecological value, as well as the Straits of Gibraltar Nature Reserve and numerous beaches of great scenic and sporting interest and with a high level of tourist activity.

Discover

University of Cadiz
Campus of Algeciras (Spain)



Puerto de Algeciras



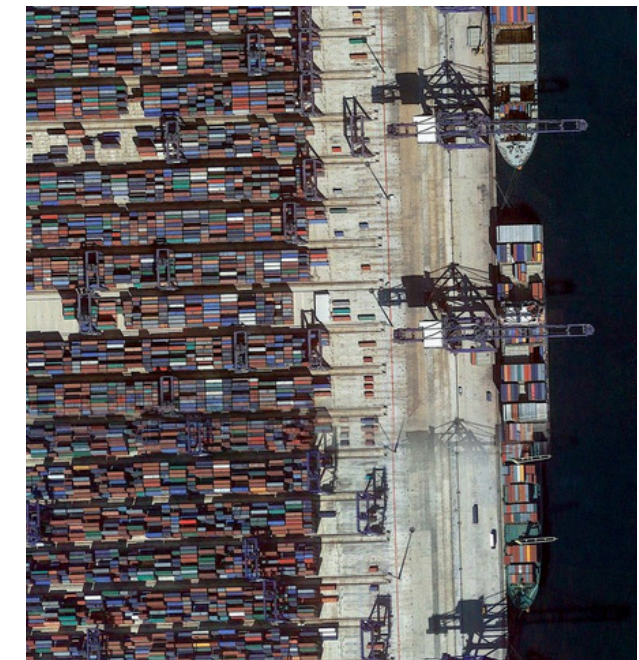
PORT OF ALGECIRAS (Spain)

The Port of Algeciras: A Gateway Between Continents

Nestled in the southern tip of Spain, at the crossroads of the Atlantic Ocean and the Mediterranean Sea, lies the Port of Algeciras. Strategically positioned in the Strait of Gibraltar, this port has become a global powerhouse in maritime trade, boasting impressive dimensions, diverse traffic, and a remarkable throughput.

A Landscape of Immensity

Spanning an area of 320 hectares (800 acres), the port boasts a quay length of 11.5 kilometers (7.1 miles). Its deep waters, reaching depths of up to 18 meters (59 feet), offer safe haven to some of the largest vessels traversing the globe. This impressive infrastructure allows the port to handle a vast array of cargo and passenger traffic.



Railway Port Terminal

To boost one of the most sustainable transport modes, the train, Algeciras Port is developing a Rolling Motorway project, thanks to the railway facilities in the port area.

The Port of Algeciras has a total of three rail branch lines connecting the South Access to the Isla Verde Interior and Exterior Rail-Port Terminals (T1 and T2).

The total length of all rail lines is 6,311 meters. The rail lines have a standard gauge of 1,435 millimeters.

The railway lines at the Port of Algeciras play a vital role in the transportation of goods between the port and the rest of Spain and Europe. They are an important part of the port's infrastructure and help to ensure that the port remains competitive in the global market.



2

Study Programme

MIPMAL at a glance!

Learning Approach

Purpose of the Programme

Curricula

Research Track

Mobility

Assessment Methods

Grading System

Joint Diploma Issue

Future Jobs

MIPMAL at a glance!

Enrolling in the MIPMAL Master Programme will launch you on an educational voyage. Drawing inspiration from the Sea, you will learn to navigate the unpredictable “sailing” conditions of today’s management landscape, much like seasoned sailors.

The degree's structure has been designed with the unique involvement of companies to create a collaborative learning and skill development environment between academia and business.

Y1. Semester 1: View from the Sea Side. Module 1. Port Services & Operations (30 ECTS)

Y1. Semester 2: View from the Land Side. Module 2. Port Economics & Logistics (30 ECTS)

Y2. Semester 3: Connections among Both Sides. Module 3. Port Law & Digitalisation (30 ECTS)

Y2. Semester 4:

- **Option A: Industrial Track.** Internship (20 ECTS) + Master's Dissertation (10 ECTS)
- **Option B: Research Track.** Master's Dissertation (30 ECTS)



Learning Approach

Our aim is to create a learner-centred, inquiry-based and curiosity-driven learning environment. We recognise that effective teaching plays a crucial role in enhancing your motivation, self-reflection and engagement in the learning process. This is why we have carefully considered teaching methods, class sizes and the integration of e-learning.

We strive to make teaching interesting and varied, and to ensure that the methods and pedagogy chosen help you to achieve the Programme Learning Outcomes (PLOs). Rather than a top-down approach, we emphasise the importance of allowing you sufficient time to develop innovative solutions to problems through discussion and debate, including the analysis of complex real-world case studies.

This approach allows you to explore the pros and cons of each potential solution, leading to the identification of the best possible outcome.



Purpose of the Programme

The programme aims:

- To nurture a cadre of port service professionals who better understand how ports work, emphasising sustainable port management practices, marine conservation efforts and advancements in green technologies;
- To expose a new generation of undergraduates to the opportunities involved in port-related careers;
- To develop a stronger and wider expertise in port related knowledge and skills that are so useful to island and coastal communities and societies.

Curricula

Semester by semester



Y1. First semester. View from the Sea Side

Module 1. Port Services & Operations. 30 ECTS

MIP1.1 Introduction to MIPMAL	5 ECTS
MIP1.2 Operations & Services in Ports	5 ECTS
MIP1.3 Terminal Design & Construction	5 ECTS
MIP1.4 Cargo-Handling Equipment Technology	5 ECTS
MIP1.5 Energy Transition	5 ECTS
MIP1.6 Sustainable Port Cities	5 ECTS



Y1. Second semester. View from the Land Side

Module 2. Port Economics & Logistics. 30 ECTS

MIP2.1 Port Governance	5 ECTS
MIP2.2 Strategic and Port Master Plans	5 ECTS
MIP2.3 Economic Evaluation of Port Infrastructure	5 ECTS
MIP2.4 Port Competition & Competitiveness	5 ECTS
MIP2.5 Supply Chain Management	5 ECTS
MIP2.6 Port Logistics	5 ECTS



Y2. Third semester. Connections among Both Sides

Module 3. Port Law & Digitalisation. 30 ECTS

MIP3.1 Logistics Modelling	5 ECTS
MIP3.2 Digitalisation and IT Tools	5 ECTS
MIP3.3 Introduction to the International Law of the Sea	5 ECTS
MIP3.4 Core Issues and Development of Maritime Shipping Law	5 ECTS
MIP3.5 Port Activities and the Environment	5 ECTS
MIP3.6 Research Methods	5 ECTS



Y2. Fourth semester

Module 4. 30 ECTS

MIP4.1 OPTION A. Industrial track: Internship (minimum 3 months) + Master's Dissertation	20 ECTS 10 ECTS
MIP4.2 OPTION B. Research track. Master's Dissertation	30 ECTS

Research Track

Choosing the Pathway

In the fourth semester, you will pursue the pathway chosen during the first academic year. Two options have been delineated to cater to students' interests, offering the choice between a more professional or research-oriented profile.

Option A: Industrial Track

Internship (20 ECTS)

+

Dissertation (10 ECTS)

As part of the joint master's degree programme, you will undertake internships at ports or logistics firms at each participating institution, culminating in the submission of detailed internship reports. These reports serve to assess students' capacity to apply theoretical knowledge in practical, professional settings, and to cultivate skills pertinent to the industry.

Dissertation: The text should have a minimum of 25 pages, excluding appendices and references.

Oral defence: presentation (maximum 20 minutes) and public discussion (maximum 40 minutes) with the intervention of all jury members.

Internship

Once you have been assigned to an internship and all the criteria have been met, you may proceed to set up an internship agreement. An annex detailing your tasks, as specified by the company or organization, should be included.

Internships provide you with a unique opportunity to gain practical experience and increase your knowledge in an identified area of expertise by engaging in a specific work/research-based setting.

You should decide at the end of the first year of the programme which pathway you would like to choose among the five universities.



Option B: Research Track

Master's Dissertation (30 ECTS)


The master's dissertation typically involves extensive research and analysis on a topic related to the complex operations, strategic management, and logistical challenges of modern port and maritime industries.

Initially, you will submit a research proposal detailing the intended research question, methodology, and literature review, which is evaluated for feasibility and academic rigour. Following approval, students undertake the dissertation, a significant piece of original research that assesses their ability to conduct independent research, analyse data, and present findings coherently. The process culminates in an oral defence, where you may present your research findings and respond to questions from a panel of experts, demonstrating your in-depth knowledge and ability to engage in scholarly discourse.

Dissertation: Length and font size: the text, excluding appendices and bibliography or references, should have a minimum of 75 pages.

Oral defence: presentation (maximum 20 minutes) and public discussion (maximum 40 minutes) with the intervention of all jury members.

Mobility

Cohort	Y1. Semester 1	Y1. Semester 2	Y2. Semester 3	Y2. Semester 4
2025/2027				Pathway Selection Mobility to one partner institution
2026/2028				Pathway Selection Mobility to one partner institution
2027/2029				Pathway Selection Mobility to one partner institution
2028/2030				Pathway Selection Mobility to one partner institution
2029/2031				Pathway Selection Mobility to one partner institution
2030/2032				Pathway Selection Mobility to one partner institution

The master's programme includes a compulsory mobility period of 12 months, encompassing two semesters in the second year.

Furthermore, the flexibility to select your master's dissertation and internship locations will empower you to tailor your learning to align with personal and career aspirations, fostering deeper engagement and professional development in their chosen field.

The five universities are connected through the Erasmus+ programme, ensuring student, academic, and staff mobility, with the relevant agreements being established accordingly.

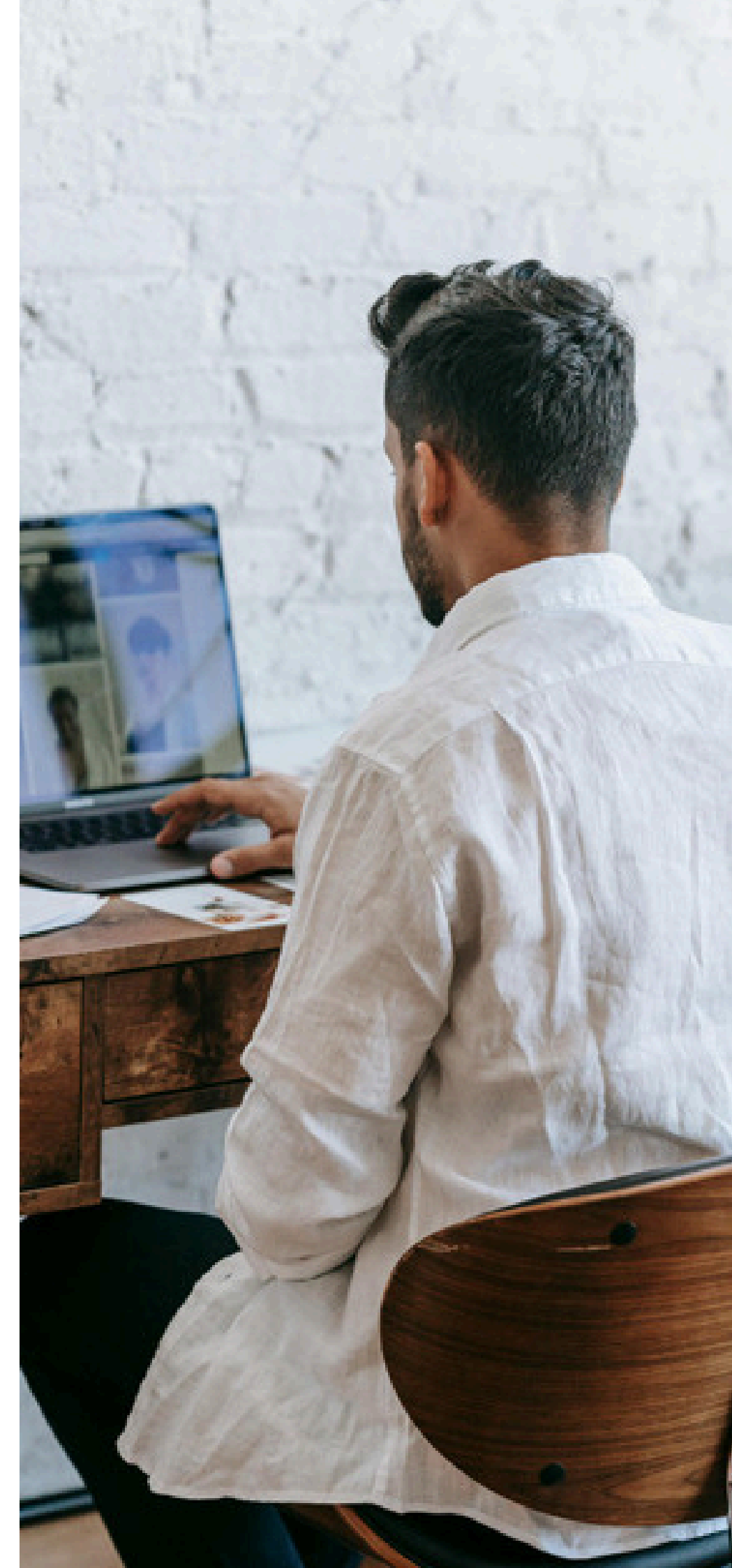
Grading System

Your performance, examination and assessment results are given using the ECTS system with a corresponding percentage grade where this is deemed necessary by the lecturer.

- 0 – 49% of the total score - **Fail (F)**
- 50 – 59% of the total score - **Sufficient (E)**
- 60 – 69% of the total score - **Satisfactory (D)**
- 70 - 79% of the total score - **Good (C)**
- 80 - 89% of the total score - **Very Good (B)**
- 90 – 99% of the total score - **Excellent (A)**
- 100% of the total score - **Exceptional (A+)**

The SEA-EU universities have developed a general grade conversion table, based on the grading practices of the partner universities. The table below can assist you, if necessary, in translating your score into a “local” grade.

ECTS Grade	FAIL FX - F	SUFFICIENT E	SATISFACTORY D	GOOD C	VERY GOOD B	EXCELLENT A	EXCEPTIONAL A+
SEA-EU Joint Programmes	0 – 49%	50 – 59%	60 – 69%	70 – 79%	80 – 89%	90 – 99%	100%
CROATIA	1	2		3	4	5	/
FRANCE	0 – 9.9 (<10 Insufficient;<7 Very insufficient)	10 – 10.9(10 Average)	11 - 11.9	12 – 13.9(12 Satisfactory)	14 – 15.9	16 – 17.9(>16 Very good, excellent)	18 - 20
GERMANY	4,1 – 5,0	3,6 – 4,0	3,1 – 3,5	2,1 – 3,0	1,6 – 2,0	1,0 – 1,5	-
ITALY	0 – 17.9	18 - 22	23 - 25	26 - 27	28 - 29	30	30L
MALTA	F 0-44%	PG*: 45 - 49	D+ UG**: 50-54D UG: 45-49 PG 50 - 54	C+ UG:69-60C UG - 55-59 PG - 55 - 69	B+ UG - 75-79B UG - 70-74 PG -70-79	UG - 80-89PG 80-100	90 - 100
NORWAY	F	E	D	C	B	A	A
POLAND	2(Fail 50% and less)	3.0(Pass – 51%–60%)	3.5(Satisfactory – 61%–70%)	4.0(Good – 71%–80%)	4.5(Very good – 81%–90%)	5(Excellent – 91% and more)	
		satisfactory (3.0) (average of grades up to 3.20)	satisfactory plus (3.5) (average of grades 3,21 – 3,70)	good (4.0) (average of grades 3,71– 4,20)	good plus (4.5) (average of grades 4,21 – 4,50)	very good (5) (average of grades 4,51 – 5,00)	
PORTUGAL	0 - 9	Passing 10 - 11	Satisfactory 12 -13-	Good 14-15	16 - 17	18 - 20	
SPAIN	0 – 4,9(Suspensio – failed)	5 – 5,9 (Aprobado – passed)	6 – 6,9(Aprobado – passed)	7 – 7,9 (Notable – credit)	8 – 8,9 (Notable – credit)	9 – 10 (Sobresaliente – outstanding)	9-10 MH (Distinction – limited to 5% of students)



Assessment Methods

Your progress, related to both activities and achievement of the programme learning outcomes (PLOs), will be closely monitored throughout the study programme.

During each course, your active participation (discussion, self-assessments etc.) is expected as well as fulfilment of tasks (presentations, seminars, etc.) as defined in each course.

Lecturers will keep records of your activities, as they will be one of the evaluation criteria. In addition, your competencies will be formally assessed in each course according to the procedures and criteria defined in the course syllabi. You will be permanently informed about your progress and achievements. Your final grade will be the result of the activities, tasks, achievements as well as formal assessments.



The consortium ensures that courses passed at any one of the participating universities are fully recognised by the other universities participating in the master's programme.

During the MIPMAL master's programme, you will be assessed and examined by different lecturers from different institutions. The procedures jointly devised and agreed upon will enable MIPMAL teaching staff to ensure fairness, consistency and equity in their assessment procedures.

In case of disagreement over a grade, you will first be invited to discuss with the Academic coordinator. Should the problem persist, a reviewers board will be constituted for resolution.



Joint Diploma Issue

The joint degree awarded shall be testified by the issuance of a joint Master's diploma and joint diploma supplement.

UCA, as the Coordinator University of the consortium, will issue your Diploma, on behalf of the rest of the universities of the consortium, and will provide you with the diploma supplement.

The diploma supplement shall follow the template developed by the European Commission, the Council of Europe, and UNESCO/CEPES and shall be adapted to any further specifications in the national legislation of the issuing university, where applicable.



Port Operations Manager

Overseeing day-to-day operations, ensuring efficient cargo handling, berth utilisation and vessel scheduling.

Logistics Coordinator

Managing the transportation, storage and distribution of goods, optimising supply chain processes for maximum efficiency.

Port Marketing and Business Development Officer

Promoting the port's services to potential customers, identifying new business opportunities and developing marketing strategies.

Environmental Compliance Manager

Ensuring compliance with environmental regulations, implementing sustainable practices and managing environmental impact assessments.

Customs Compliance Specialist

Ensuring compliance with international trade regulations, manage customs documentation and facilitate the smooth clearance of goods.

Shipping and Forwarding Manager

Organising and coordinating the movement of goods across different modes of transport, negotiating contracts with carriers and ensuring timely delivery.

Maritime Risk Analyst

Assessing and mitigating risks associated with port operations, including safety, security and environmental issues.

Port Technology Specialist

Implementing and managing technology solutions to improve port efficiency, such as container tracking systems, automated cranes and digital cargo management platforms.

Supply Chain Analyst

Analysing supply chain data to identify areas for improvement, optimise inventory management and reduce transportation costs.

Port Development Planner

Participating in the planning and development of port infrastructure projects, assessing feasibility and optimising port layout and design.



Future Jobs



Discover

University of Split (Croatia)



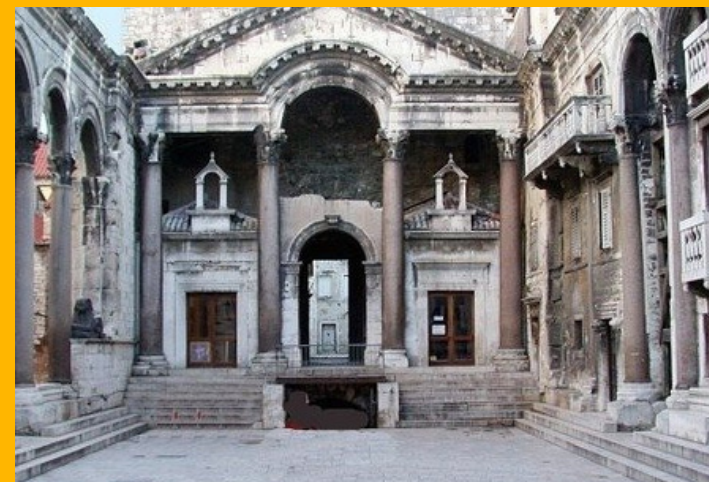
**Sveučilište
u Splitu**

Split. World Heritage Site

Split is the second-largest city in Croatia and home to extraordinary historical monuments, exquisite gastronomy and joyous people. Use the following [link](#) to walk through the streets of Split virtually.

The story of Split is already 17 centuries old, dating to the time when the Roman Emperor Diocletian decided to build his Palace right on the peninsula near the great Roman city of Salona, where he wanted to spend the last years of his life. During these 1700 years, the Palace has slowly turned into a city, which to this day lures visitors with its rich tradition, glorious history and beauty of its natural and cultural heritage.

Wherever the road leads you in Split, you will find excellent restaurants, traditional taverns, vibrant bars and flourishing nightlife. If you have enough time for an excursion, visit the area of Split, full of gems of natural and cultural heritage.



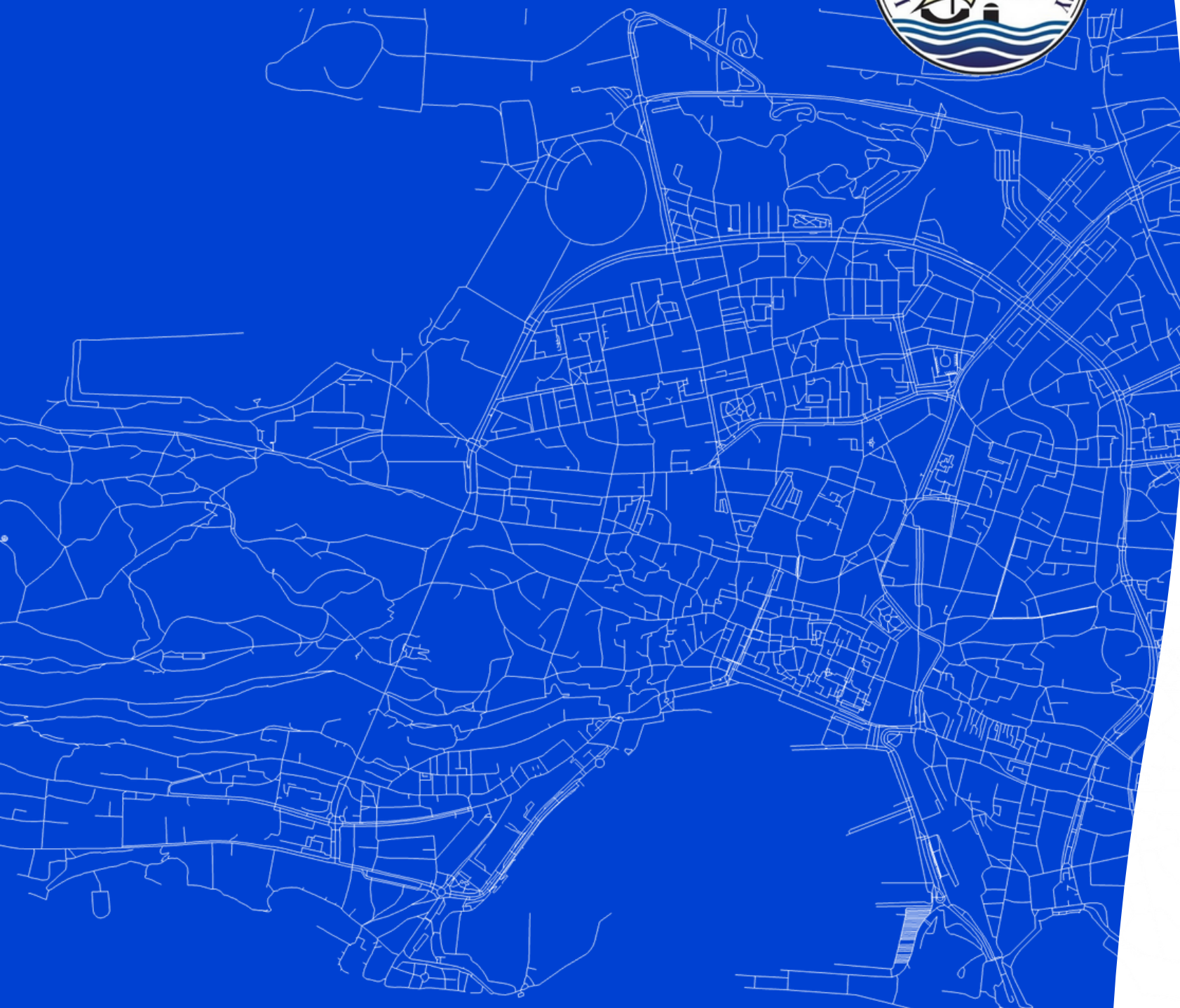
The University

The University of Split was officially established on 15 June 1974 when the units having already had an effect in their professional, scientific and teaching areas entered its structure. As a predominant scientific and teaching public institution in the region, the University of Split has expanded during the course of the past 45 years to include eleven Faculties, one Academy of Arts and four University Departments.

There are about 20,000 students enrolled in the University's undergraduate, graduate and postgraduate programmes.



The University of Split focuses on research areas tied to the unique natural, cultural, and economic aspects of the Croatian Adriatic and Mediterranean regions. Key fields include heritage conservation, marine sciences, coastal economies, tourism, maritime law, engineering, social sciences, and health. This interdisciplinary focus positions the University as a leader in regional studies both in Croatia and beyond.



The Port of Split: the gateway to the Islands

The port of Split is situated in the central part of the eastern coast in the Adriatic basin. The favorable geostrategic location enabled primarily the development of passenger transport towards the domestic markets mainly situated on central Dalmatian islands and other coastal destinations but also the segment of cruise tourism to various international destinations in the Adriatic and Mediterranean.

Passenger Transport

The port of Split is the largest passenger port in Croatia, therefore, its development is mainly directed to passenger and cruise transport, having favorable implications on the potential future growth of the port, creating multiplicative effect on the whole region especially important for the sustainable development of the islands, as an important segment for Croatia. The passenger terminal is located in the City port basin and connected with islands and other coastal destinations by ferry, passenger and high speed boats (catamaran) vessels, while also performing regular international passenger trade with Ancona in Italy. The transport of passengers and vehicles is operated by public and private enterprises in national and international transport. The passenger and vehicle traffic flows operated by the state owned company *Jadrolinija*.

Cargo Transport

The northern part of the port is dedicated to the transport of cargo, equipped with cargo terminals being able to accommodate all types of vessels, depending on the typology of freight, typically including dry bulk products such as iron ore, coal, cement and grain as well as liquid products. Imported cargo is primarily intended for local markets of various industries in port hinterland, but also by supplying the steel industry in Bosnia and Herzegovina. General cargo terminals are used to provide trade services to worldwide destinations depending on the demand for commodities, while the container terminal is connected with Mediterranean hub ports predominantly in the Adriatic.



PORT OF SPLIT
(Croatia)



3

General Procedures, Rights and Responsibilities

Application, Admission & Enrolment
Re-sits & Re-assessment
Coursework Submission Procedure
Fees & Scholarships
Joint Degree & Diploma Supplement



Joint Platform for Application, Selection and Admission

SEA-EU



SEA-EU participating Universities



Joint Administration Office



Joint Administration Office



Joint Administration Office



Joint Administration Office



Academic Steering Committee

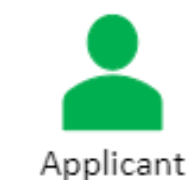
Application

Documents required

- Recent photograph (Photographs serve an identification purpose. Therefore, 'selfies,' casual photos, or any other photos that do not meet the formal requirements of official documents will NOT be accepted).
- Scanned copy of a valid Passport/ID Card document.
- Scanned copy of academic credentials at EQF Level 5 (180 ECTS) or equivalent.
- Scanned copy of transcript of academic records at EQF Level 5.
- Scanned copy of B2 (CEFR) English Level.
- Europass CV in English (max. 2 pages). Europass CV recommended
- Recommendation letters (optional).

Online Application

The application process starts with a visit to the SEA-EU Joint Programmes website: <https://sea-eu.org/education/>



Applicant

Submission of Application

2

1

Call for Applications



Applicant

Appeals to provisional list of candidates

4

3

Anonymised publication of provisional list of candidates



Academic Steering Committee

Selection process

6

5

Anonymised publication of final list of candidates



Applicant

Appeals to provisional list of selected candidates

8

7

Anonymised publication of the provisional list of selected candidates



Applicant

Acceptance of selected candidates

10

9

Anonymised publication of the final list of students selected candidates

Time

Admission

As admitted student, you will receive the formal offer of admission to the programme electronically. This communication will provide detailed information regarding the enrolment procedures, deadlines, and any conditions or contingencies that must be fulfilled for acceptance.

Upon receiving the admission offer, you are required to formally accept it within the deadline communicated in the admission letter.

Enrolment

Academic requirements for enrolment

a) Legalisation is not required in the case of students whose documents were issued by countries in the European Union or members of the European Economic Area.

b) All other students must observe the following conditions:

- Documents issued in countries signatory to *The Hague Convention* of 5 October 1961 need only be stamped with the Apostille of The Hague by the relevant authorities in the country of issue.
- Documents issued in all other countries must be duly legalised. Legalisation services are provided by:
 - The Ministry of Education of the student's home country, for degree certificates and transcripts, and the relevant Ministry of the home country for birth certificates and certificates of nationality.
 - The Ministry of Foreign Affairs of the country in which the documents were issued.

**Official Translation of documents issued outside Europe. Diplomas and transcripts of records, and other official records, issued outside Europe should be officially translated into English by a Certified Translator.*

You have to register at the beginning of each academic year at UCA, as the Coordinating University of the MIPMAL Master and as the Diploma issuing University.

To facilitate the process, UCA will make available to the host universities the personal and academic data of the students, so that it is not essential for the students

to carry out any administrative formalities.

However, the host university, as part of the registration process, may contact you to inform you about welcoming events, university rules and services, and possibly require you to sign a declaration that you have received the above-mentioned information.



Coursework Submission Procedures

Coursework should be submitted either on the common Moodle platform, or as requested by the lecturer or lecturing team. You are expected to work hard and diligently, completing and handing in any work to be assessed within the required deadlines. Late submission of work with no valid given reason will be graded with a fail. However, you may inform the lecturer, at least 10 days before the deadline, that there are

special circumstances that justify the late submission of an assignment. In this case, the lecturer may ask you to present a medical certificate or other type of document proving the alleged circumstance. This is at the discretion of the lecturer or lecturers concerned and you do not have the automatic right to an extension unless the lecturer explicitly tells you this request has been granted.

Re-sits & Re-assessments

The MIPMAL implementation approach represents an innovative framework to provide a cohesive and enriching educational experience. The model comprises two consecutive courses of two weeks each, followed by a week dedicated to the comprehensive assessment of both courses. A resit will provide students with the opportunity to be reassessed for a course they did not pass on their first attempt. This additional opportunity will allow the student to achieve a pass, ensuring that they meet the academic requirements of the course and can continue their studies.

Resits will be held at the end of the academic year to allow students time to prepare thoroughly and demonstrate their understanding of the course material. Students may retake failed courses in the next academic year, with a maximum of four assessment attempts in total (twice per academic year).

The unexcused nonattendance of an examination session shall in any event result in the loss of an examination attempt.



Re-registering

In the event that you or the students have not passed all courses within the duration of the programme, you can apply for a new opportunity to finish your studies by writing to the Academic Steering Committee (ASC).

The ASC can authorise, or decide not to authorise, you to enter into the next cohort, to finish the courses that have not passed. You will have to re-register, paying tuition fees for the ECTS credits not passed.

Fees

Academic Year	Enrolment Fees		Payments
Y1	1st semester	€2,250	€4,500
	2nd semester	€2,250	
Y2	1st semester	€2,250	€4,500
	2nd semester	€2,250	
(including: International Health Insurance, Student Card, ...)		TOTAL	€9,000

Scholarships

UCA: [Scholarships and Financial Aid](#)

UNIST: [Scholarships/ Ceepus](#)

UG: [Scholarships](#)

UM: [Scholarships](#)

UAlg: [Bolsas e Incentivos](#)



Discover

University of Gdańsk (Poland)



City of Freedom and Solidarity

Gdańsk was a city where some of the most important events for the world and Europe took place. A city with over 1,000 years of tradition, one of the largest ports on the Baltic Sea. It is a unique metropolis that has always been imbued with the spirit of freedom and courage. The Latin saying *Nec Temere, Nec Timide*, the motto of Neptune's City, best reflects the character of this once Hanseatic city. It is a timeless motto that should guide each and every one of us: courageously, but with caution.

Gdańsk, together with neighbouring Gdynia and Sopot, forms a common organism, the "Tricity", and together they create an infinite number of possibilities and original tourist proposals. As a city born of the sea and dreams, Gdynia has become one of the most important Baltic ports and shipbuilding industries. Situated right on the coast, surrounded by cliffs and forests, it is not only a great place to relax, but also to learn about the



history of the reborn independent Poland. Here, too, you will taste dishes not only traditionally associated with the sea, but cuisine from all over the world. The symbol of Sopot is the longest wooden pier in Europe. More than a century old construction with characteristic white railings enters almost half a kilometre into the waters of the Bay of Gdansk.



The University

The University of Gdańsk may not be the oldest, but it has already established itself as one of the most important scientific centres in Poland and on the Baltic Sea. In the sea your way shines through us from the beginning and this is the main idea behind our work, goals and scientific activities.



The Port of Gdańsk. The Logistics Hub for Central and Eastern Europe

The Port of Gdańsk is the only Baltic port that handles direct container connections with China. It is the maritime gateway to Central and Eastern European markets for Asia, the fastest-growing region in the European Union.

The Port of Gdańsk consists of two parts: the Inner Port, located along the Martwa Wisła River, and the deepwater Outer Port. This division gives Gdańsk the ability to handle both – smaller vessels as well as the real global giants, such as 400-meter-long container ships. The inner port area includes a container terminal, a ferry-passenger and RO-RO terminal, quays for handling passenger cars, citrus fruits, sulphur, and fertilizers. The inner port is adapted for handling general cargo and bulk goods (such as steel products, heavy and oversized cargo, grains, artificial fertilizers, ore, and coal).

Diverse Cargo Handling

Modern transshipment capabilities determine the multifunctionality of Gdańsk's port. General cargo is the best example of this: it includes heavy and oversize items, as well as steel products and other commodities packaged on pallets and in big and smaller bags. Conventional general cargo is transhipped at almost all of the quays of the Inner Port. The quays of the Duty Free Zone specialise primarily in the handling of citrus fruit and frozen fish.

At the Oliwskie and Wiślane Quays and the Górnicy Basin, steel products prevail, but heavy and oversize items are also handled. Thanks to modern Veterinary Control Border Posts located at the Wiślane Quay and near the DCT Gdańsk terminal, cargo of animal origin is thoroughly controlled in accordance with the applicable EU standards.



Logistics Infrastructure

In the vicinity of the Port of Gdańsk and the DCT container terminal, gigantic logistics centres are emerging, offering various services, including so-called light production. On one side, there are port quays, and on the other, direct access to national and international roads, as well as railway and air connections – these are undoubtedly Gdańsk's strengths.

The Pomorskie Logistics Center (PCL) is a modern complex located on a 110-hectare plot, in direct proximity to the deep-water Baltic Hub container terminal. It offers modern warehouses covering over 506,000 square meters. The facility is not only adapted for warehousing but also for production. The food industry is also developing in the ZMPG (Port of Gdańsk Metropolitan Area). On a 4-hectare plot, the PAGO cold store has been established, a warehouse for storing deep-frozen products with a storage area of 15,500 m².

Discover

Port of Gdańsk
(Poland)



4

Supporting Services

Visa & Permit for Non-EU candidates

Green Travel

Accommodation

Health Insurance

SEA-EU Buddy System

Linguistic Support

Equal Opportunities

Diversity

Gender Equality

People with Disabilities

Psycho-pedagogical Help

Visa & Permit for Studies for Non-EU candidates

Before arrival: Visa Application

You as a non-EU student need to take into account the important visa considerations when joining MIPMAL and act upon them to ensure that you have the correct visas and permissions for undertaking all of the programme's periods of mobility.

You should research visa application requirements for all mobility periods and allow sufficient time to apply for each visa throughout the programme. In particular, self-funded students should be aware of the evidence of financial resources required for each application. The coordinating university will assist you by quickly providing the necessary admission documents for the visa application process.

Once you have been admitted to the Master's programme, you should immediately contact the nearest embassy in your country to find out about the requirements for obtaining the student visa. The process can take up to 6 months to obtain a visa and you should ensure that your passport is valid for at least 2 or 3 years.

Some or all of the following documents will be requested by the embassy:

- Application form
- Letter of admission from the host university stating the studies to be undertaken and the relevant dates
- A document proving that the student will be able to support him/herself during the period of study.
- Full copy of the passport (valid for 2/3 years).
- Copy of insurance policy
- Health certificate
- Criminal record
- Passport size photographs
- Letter confirming accommodation
- Tax payment

Other relevant documents may be required from the relevant Embassy/Consulate in the country of residence.

**Visa issues are competence of national states, so the rules are not exactly the same in all EU countries. Please contact the SEA-EU office of the starting university if you have any doubt.*

On arrival: Application for Permit of Studies (Y1)

Once you have obtained a visa and arrived in the country to start the Master's programme, the next step is to apply for a study permit for a maximum of one year. Information on how to apply is usually available on the official immigration or government website of the country where the programme is starting.

Ensure that the following steps are taken:

1. Meet all the requirements for a study permit. This may include maintaining full-time enrolment, having sufficient resources to support themselves and meeting any other conditions imposed by the immigration authorities.

2. Gather all the necessary documents to apply for a study permit. Common documents include:

- Application form
- Valid passport - full copy
- Letter of enrolment from your educational institution
- Proof of financial support
- Proof of health insurance
- Passport size photographs
- Proof of accommodation

3. Ask for an appointment at the nearest Immigration Office.

4. Submit the application. Make sure the application is complete and accurate to avoid delays.

5. Pay application fees. Pay any required application fees. Check the accepted payment methods and ensure you receive a receipt.

6. Wait for processing. Processing times for study permits vary. Be patient and wait for your application to be processed. You can check the status of your application on the immigration authorities' online portal or contact them for updates.

7. Collect your study permit. Once your study permit has been approved, follow the instructions to collect it. This may involve a return visit to the Immigration Office.



****IMPORTANT:** It is the responsibility of the student to ensure that visas are obtained in time to start the relevant mobility periods of the programme.

Mobility for the Y2. Renewal of the Permit for Studies

The renewal of the permit usually involves coordination between you, the host institution and the Foreign Office or relevant immigration authorities.

1. Check the expiry date of your permit. Plan to start the renewal process well before this date to avoid any legal issues.
2. Gather all necessary documents for the renewal. This may include an enrolment letter from the host institution, proof of financial means, proof of accommodation, and any other documents required by the immigration authorities.
3. Submit your application to the foreign office.
4. Receive the approval. Once your application has been processed, you will receive a decision from the Foreign Office.

Visa Support Offices at Partners Universities

UCA	Student Office
UALG	Student Office
UG	Student Office
UNIST	Student Office
UM	Student Office

Green Travel

Green mobility is an integral part of our identity, as our peripheral and coastal geography puts us in a unique position to embrace Europe from its shores, shaping our distinct identity and future trajectory. However, this advantage comes at a significant environmental cost.

Our dependence on air and coastal transport poses a clear threat to the environment, affecting ecosystems and contributing to pollution. Despite these challenges, we are committed to finding sustainable solutions that preserve our coastal heritage while minimising our ecological footprint.

To implement green mobility in SEA-EU joint programmes involving various European universities, several key aspects have been considered:

#Promoting Active Transportation

#Integrated Mobility Planning among countries/intercampus mobility

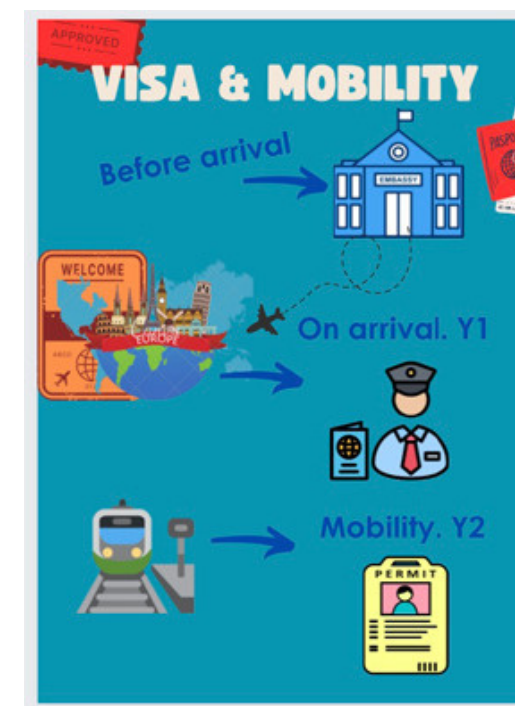
#Reducing Carbon Footprint

Look at the bright side: there is plenty of time to work on your dissertation, or your coursework, on the train!

In the Alliance we are very far from each other - spread all across the edges of the continent of Europe, so we know you'll have to take the plane sometimes. That's one of the reasons why as a student on this programme you won't have to move each and every semester. The planet needs open-minded mobile students, but it also needs less CO2 emissions.

We therefore encourage you, where possible, to limit the number of flights you take when travelling. To help you figure out different ways of getting from one place to another, visit the following websites:

- [Rome2Rio](#) - a website which will give a few realistic ways of travelling from place to place via rail.
- Or have a look at the [Network of Night Trains at Back On Track](#).



Did you know?
SEA-EU is highly concerned with sustainable transport!



Accommodation

Pursuing a master's degree is an exciting and challenging phase of academic and personal development. As you embark on this journey, finding suitable accommodation plays a crucial role in your overall experience and success. Your living environment significantly impacts your comfort, well-being, and academic performance. Therefore, understanding the importance of accommodation and making informed choices is essential.

A well-chosen accommodation can provide the necessary environment for focused study and research. It offers a quiet, comfortable space free from distractions, allowing you to concentrate on your coursework, projects, and dissertation. Proximity to campus and libraries can also reduce commute times and increase your productive hours, facilitating better academic performance.

Accommodation often provides opportunities to connect with fellow students, forming a valuable support network. Living in close proximity to your peers enables you to share experiences, collaborate on projects, and develop lasting friendships. This sense of community can be particularly beneficial for international students, helping them to adapt to a new culture and environment.



Understanding the financial aspects of accommodation is essential for managing your budget effectively. Therefore, exploring different housing options and their associated costs will help you make an informed decision that aligns with your financial situation.

UCA: [Accommodation info \(Algeciras Bay\)](#)

UNIST: [Accommodation info](#)

UG: [Student Housing info](#)

UM: [Accommodation info](#)

UALG: [Accommodation info](#)

The programme provides you with insurance coverage for a two-year period, in compliance with the requirements for mobility among partner universities. You will receive a detailed insurance package once the enrolment process is completed.

If you are an EU student it is strongly recommended that you are in possession of a European Health Insurance Card. This free card gives access to medically necessary, state-provided healthcare during a temporary stay in any of the 27 EU countries. More information on the card and on how to obtain it is available [here](#).

If you are a Non-EU student, the cover will also include all worldwide travel.

Health Insurance

SEA-EU Buddy Programme



What is the objective of the SEA-EU buddy system?

To welcome you as new students and provide information about the university at the beginning of your stay at a SEA-EU institution. Furthermore, one of the objectives is to promote greater independence and autonomy in you with respect to university life as well as your study and learning. Buddies should ideally speak the language of the country so that they can help you in practical situations where you may need help in the local language e.g. going to the doctor.

The host university will launch a buddy system in collaboration with the local SEA-EU student representative, the SEA-EU Office and local international offices, that will find students to buddy up with SEA-EU students, helping them to integrate seamlessly into the university community. It is a way for you to make friends, get to know new cultures and practice languages, and serve as a guide or contact for all SEA-EU students when they arrive at the host institution for their academic stay.

The purpose of the SEA-EU buddy system is to help you adapt to the new country and new university environment with the advice of their mentor students. All of the mentors have first-hand experience and, therefore, they know how difficult it can be to adapt to a new place and a new university.

SEA-EU Buddy System in more detail

Orientation Support

New students are paired with experienced students who can guide them during orientation activities, helping them become familiar with campus facilities, resources, and academic expectations.

Academic Assistance

Buddies may assist new students with understanding the course structure, selecting classes, and managing study schedules. They may also offer tips on effective study habits and time management.

Social Integration

Buddies help new students integrate into the university community by introducing them to social activities, clubs, and events. This can be particularly important for students who are new to the area or are international students, as in the case of SEA-EU students.

Answering Questions

New students often have numerous questions about university life, administrative processes, and campus resources. Buddies serve as a reliable source of information, answering questions and providing guidance.

Cultural Exchange

In the case of SEA-EU international students, the buddy system can facilitate cultural exchange, helping them adapt to a new academic and cultural environment. Buddies may also gain insights into different cultures through their interactions.

Emotional Support

The transition to university life can be challenging, and having a buddy provides a peer support system. Buddies may offer advice, lend a listening ear, and share their own experiences to help new students feel more comfortable and connected. The buddy system is an effective way to foster a sense of community, reduce feelings of isolation, and enhance the overall university experience for incoming students.



The common language of the Master's programme will be English. This includes, but is not limited to lectures, papers, projects and assessments.

To access the Master, you will be asked to provide a certificate proving you have the required English language skills. The programme requires you to have a proven minimum of B2 level English according to the CEFR (if English isn't your mother tongue).

Applicants who hold a prior bachelor's or master's degree awarded by an English-speaking programme from Australia, Canada, Ireland, New Zealand, United Kingdom or the USA, shall automatically be exempted from this language requirement.

Optionally, applicants can submit recommendation letters to further support their application.

This B2 level is required because students need to have a reasonable command of English in order to correctly follow the programme. Indeed, it is this that will guarantee your full ability to participate in, and benefit from the programme.

Proof of sufficient English proficiency

Accepted certificates are University of Cambridge Certificates, TOEFL, IELTS, ACLES, among others.

What do all MIPMAL universities have in common?

They're all situated by the sea, and English is the primary language everywhere. However, it's worthwhile to consider living abroad and taking a local language course to better acquaint yourself with your new surroundings.

Linguistic Support

English Assistance for Students during the Programme

During the Master's programme, the partner universities will provide you with assistance to secure the improvement of language and communication skills. This is supplementary to your programme of studies as language courses have not been added to this core programme.

This assistance will be organised as follows:

Language Centres: You will have access to the catalogue of in-person and online language courses offered at the Language Centres at the host Universities.

The SEA-EU partners will provide advance notice of these courses. They will include language training in English, as well as in the official or local language of the partner universities.

UCA



CSLM

UAlg



FCHS

UG



CJO

UNIST

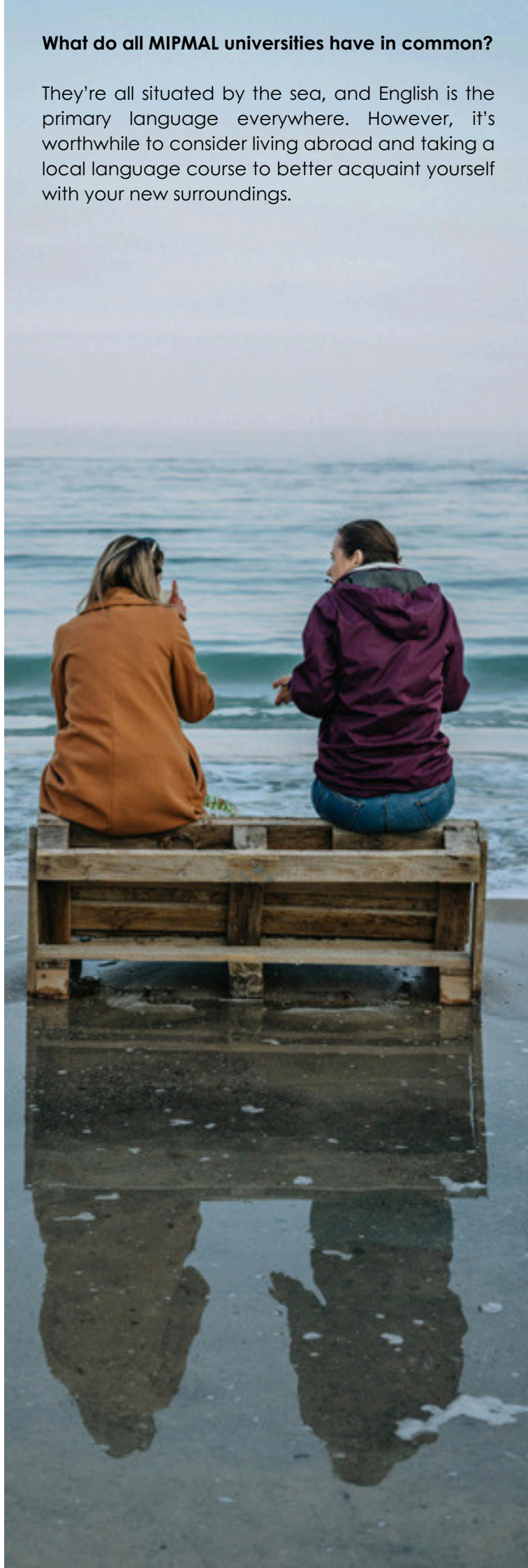


International Office

UM



Language Courses



Equal Opportunities

Indeed, as part of SEA-EU 2.0, an equality and diversity expert group is working at the Alliance level to mainstream gender equality in SEA-EU universities for staff and students as this is a priority for SEA-EU.

As a joint programme, we recognise that each individual is unique, with a particular personality, social background, networks and talents.

Whilst we celebrate diversity, we know that this may also pose challenges to students and staff alike. Indeed all Alliance members and universities of the consortium have mechanisms to ensure equal opportunities are in place. These are tasked with fighting for

equality in diversity on each and every campus and strive to foster structural changes in social dynamics. With five international partner institutions and a joint programme which will be ready to run and to be advertised worldwide, an overt aim of our application is to further internationalise our universities by including students from our Alliance and elsewhere.

The Equal Opportunities Policy applied in the admissions process for this joint master's degree encompasses a broad framework of principles and practices designed to promote fairness, inclusion and accessibility for all applicants.

This policy will ensure that candidates are assessed solely on merit, irrespective of factors such as ethnicity, gender, religion, disability or socio-economic background.



Furthermore, MIPMAL students will be studying how unequal opportunities have impacted the current management paradigm and will be exploring ways in which it needs to change.

The Academic Steering Committee will be tasked with including an equality and diversity dimension to the Quality Assurance mechanisms put into place for the programme.

Diversity - Admissions Policy

We are committed to excellence in admissions and aim to provide a professional and fair service for you. We aim to select students who have the ability and motivation to benefit from the course they intend to follow and who will make a contribution to university life. We declare to treat each you fairly, regardless of:

- age and race;
- religion, faith;
- belief and non-belief;
- skin colour;
- nationality and ethnic origin;
- disability;
- sexual orientation;
- gender presentation;
- marital or parental status;
- pregnancy and maternity;
- political belief;
- social or economic class.

SEA-EU as an Alliance is committed to equality, equity, diversity and inclusion.



Gender Equality

We are aware that gender gaps in education are a significant issue, affecting employment opportunities, economic growth, and overall health. Although Gender Equality is a core value of the EU, this matter should not only be a permanent commitment of all institutions, but it should also be a collective responsibility that we have as a society. More information can be found within each university's policy.

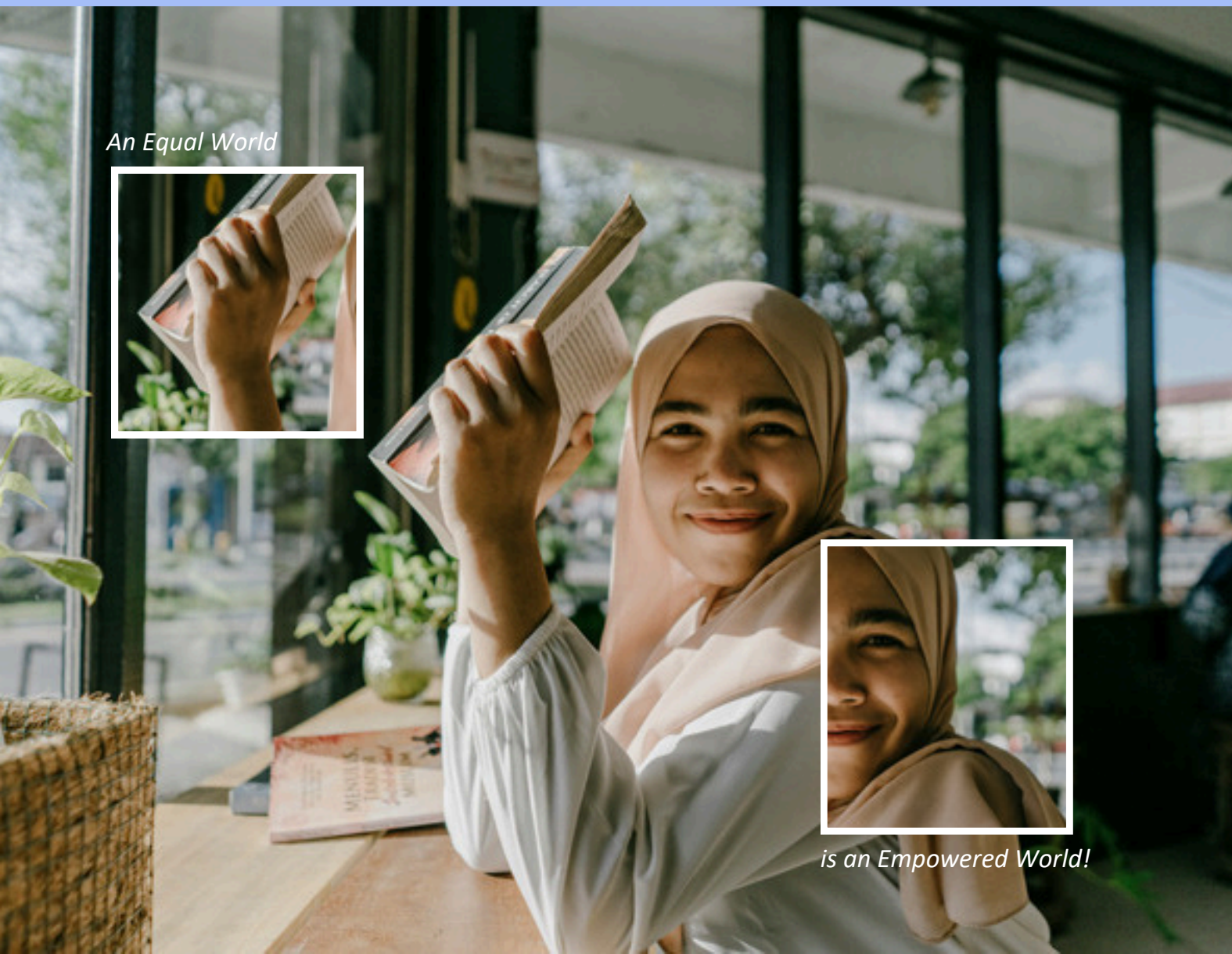
UCA: [Inclusión y Diversidad](#)

UNIST: [Gender Equality](#)

UG: [Gender Equality Plan](#)

UM: [Gender+ Equity Plan \(G+EP\)](#)

UALG: [Gender Equality Inclusivity Plan](#)



MIPMAL is committed to ensuring equality of opportunity for its students ensuring that no one is unreasonably disadvantaged because of a disability.

All of the universities inside the consortium have an explicit policy of providing support for disabled students so that they can access the full range of academic, cultural and social activities the University offers.

Psycho-pedagogical Help

It is vital to know how to deal with you when you are in situations of risk or psychological crisis, therefore, the information and procedures provided by the universities will be easily accessible to you and the entire academic community.

UCA: [Servicio de Atención Psicológica y Psicopedagógica](#)

UNIST: [Psychological Counselling](#)

UG: [Centrum Wsparcia Psychologicznego](#)

UM: [Mental Health Services - L-Università ta' Malta](#)

UALG: [Psycho-pedagogical Support Office \(GPAP\)](#)



Discover

University of Malta (Malta)



Malta. Heart of the Mediterranean Sea

Malta is a small island-state in the middle of the Mediterranean Sea. There are two official languages, Maltese and English, which will certainly help students to find their way in a new country.

Lying at the cross-roads of the Mediterranean, the University of Malta has been, over its 400-year history, the hub for international academic exchange on the island state. UM is the leading higher education institution in Malta and its structures are in line with the Bologna Process and the European Higher Education area.



How to get here?

Malta has very good transport connections and you can get to every corner of the island by bus, and in some cases also by ferry or boat. Malta has one airport: Malta International Airport (MLA).

The University

At UM, we carry out academic research and provide a vibrant higher education setting in the arts, sciences and the humanities as required for Malta's economic, social and cultural development. Our courses are designed to produce highly-qualified professionals in multiple disciplines. Our alumni community is growing exponentially: well over 3,500 students graduate in various disciplines annually.



We are committed to high standards of research and teaching and every member of staff at UM plays an important role and contributes to an outstanding student experience. Today UM is composed of fourteen faculties, a number of interdisciplinary institutes and centres, three schools and a junior college. Besides the main campus, situated at Msida, there are three other campuses: Valletta, Marsaxlokk, and in Xewkija, on the island of Gozo.



The Port of Malta. The Grand Harbour

The archipelago of Malta is surrounded by water. This self-evident statement underscores the significance of the sea in Malta's history and the country's social and economic development.

Pride of place is the **Grand Harbour** also known as the Port of Valletta, the capital city. It is a magnificent natural and all-weather harbour, and which has been substantially modified over the years, now embracing a diversity of functions: leisure and catering, a cruise ship terminal, a grain terminal, an extensive dockyard with six operational docks, wharves and fortifications. Within a radius of 3 miles/ 5 kilometres from Grand Harbour lives half the population of Malta, highlighting the continued relevance of this natural feature.



Meanwhile, a considerable part of Malta's commercial shipping is now handled by **the free port at Kalafrana**, a harbour in Malta's south-west. Malta Freeport was established there in 1988 as the first transshipment hub in the Mediterranean Sea. The company currently ranks twelfth among the top European ports and is the third largest transshipment and logistics centre in the Mediterranean region.



Gozo is the second largest island in the Maltese archipelago, with a resident population of around 30,000 (compared to the island of Malta's 500,000) and lacking an airport. Here, there is no naturally sheltered harbour. **The port of Mgarr**, just 5 kilometres away from the north of the island of Malta, has been transformed over the years into the gateway to/from Gozo. In its cramped space one finds recreational and catering facilities, harbour police, a passenger and vehicle ferry terminal, a fast ferry terminal, sea craft for pleasure cruises, bathing spots and fishing vessels.

Malta's blue economy is responsible for around 14% of its Gross Domestic Product. It includes ship, yacht and superyacht repair services, maritime transport services, cruise ship terminal facilities, the Malta Freeport Terminal operations, ship chandler services, maritime law services, fishing and aquaculture, and recreational tourism. Malta also has the eighth largest shipping register in the world (measured by gross tonnage).

The University of Malta has long been recognised for the importance of port management and logistics expertise, especially in International Maritime Law.

Discover

Port of Malta
(Malta)





5

SEA-EU Academic Life

- Welcome Week/Sessions
- SEA-EU Campuses Facilities
- Library Services
- Computer Services
- Sports
- Cultural Activities
- SEA-EU Graduates
- SEA-EU Ombudsperson

Welcome Week/ Sessions

The host universities undertake to organise welcome days for new students to get acquainted not only with the characteristics of the host city, but also with the variety of services offered by the respective university.

These events include campus tours, presentations of academic, administrative and support services, social gatherings and diverse activities that serve to provide practical guidance while fostering a welcoming atmosphere for a successful start to your academic activities.

Materials and Resources

The Consortium commits to providing SEA-EU joint programme students with access to all available facilities and resources, including those jointly developed within the SEA-EU European University framework and those offered by individual partner universities.

The SEA-EU universities hosting students have state-of-the-art classrooms equipped with the latest technology, ensuring an immersive and versatile learning experience. Students have the flexibility to attend both online and face-to-face courses, benefiting from a combination of virtual and on-campus teaching. In addition, these facilities prioritise accessibility, ensuring that classrooms are fully equipped to accommodate those with mobility disabilities, fostering an inclusive learning environment.



SEA-EU Campuses Facilities

This section provides an overview of the resources, infrastructure, and support services available at each partner institution to help you make the most of your academic experience. The SEA-EU Alliance brings together a range of universities, each offering specialised facilities to support your learning, research, and personal development throughout the programme.

Whether attending lectures, conducting research, or undertaking practical training at ports, each institution offers distinct resources designed to enrich your learning. From state-of-the-art laboratories and simulation centres to libraries, collaborative workspaces, and dedicated student support services, this section will guide you through the facilities available at each university within the SEA-EU network.

As a joint programme, MIPMAL enables you to benefit from facilities across all partner institutions, fostering an environment of intercultural learning and hands-on engagement. Becoming familiar with these resources will equip you to make the most of each phase of your study journey.

We encourage you to explore, engage, and take full advantage of the diverse and comprehensive facilities offered by each SEA-EU partner institution.

UCA

UNIST

UG

UM

UAlg



SEA-EU Graduates

SEA-EU graduates and alumni hold significant relevance within the global maritime and academic sectors due to their unique educational backgrounds, international experiences, and commitment to sustainability and innovation. As products of the SEA-EU alliance, these individuals have received multidisciplinary education encompassing maritime sciences, environmental studies, engineering, humanities, and social sciences, equipping them with comprehensive knowledge and skills that are highly valued in various fields.

Their exposure to international environments and cultures through student exchanges and collaborative projects among the SEA-EU members, imbues them with a global perspective and intercultural competence, making them adaptable and effective in diverse, multinational contexts.

SEA-EU alumni benefit from robust professional networks that connect them with industry professionals, academic mentors, and fellow graduates, facilitating career development and fostering collaborative opportunities. This network, coupled with their access to cutting-edge research and continuing education programs, positions them as leaders and innovators capable of addressing complex global challenges.

Graduate Tracking

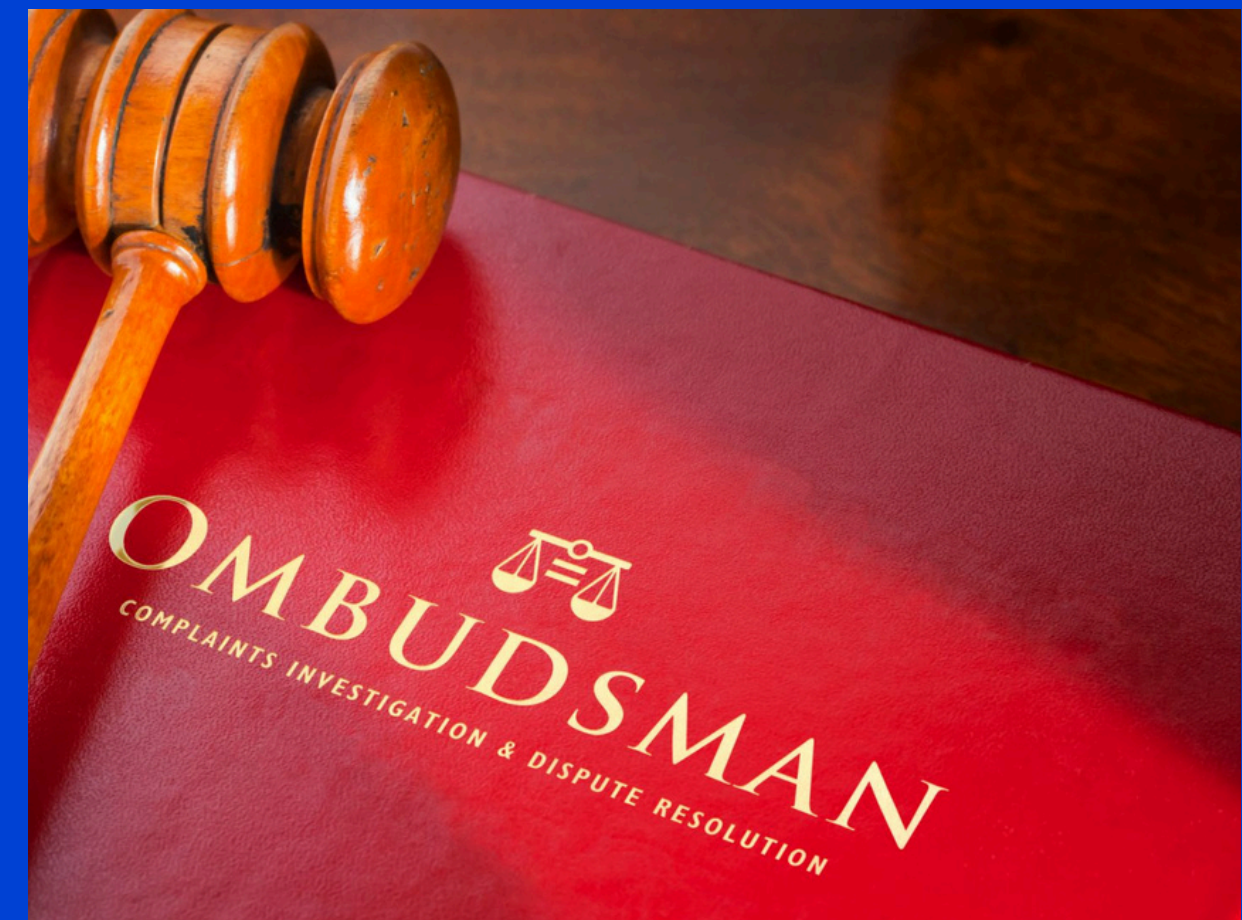
The implementation of graduate tracking within the SEA-EU Joint Programmes will be developed as it offers numerous benefits that can enhance the overall effectiveness and success of these programmes. This process will involve collecting and analysing data on various aspects of students after graduation, such as their career progress, further education, geographical location, professional achievements and contributions to their field or community.

The system will allow measuring programme outcomes, identifying areas for improvement and showcasing the success of graduates to strengthen partnerships with stakeholders. By building strong graduate networks, the joint programme will provide valuable networking, mentoring and job placement opportunities for current students. In addition, tracking graduates will identify potential donors and support resource development, contributing to financial sustainability.

Highlighting graduates' achievements enhances the reputation of the joint programme, attracting future students and increasing enrolments. Personalised professional services and ongoing engagement with graduates ensures continued support, while detailed tracking data helps to meet accreditation requirements and demonstrate the impact of the programme. Overall, graduate follow-up is essential for continuous improvement, community development, reputation enhancement and long-term sustainability.

The Ombudsperson in the SEA-EU alliance plays a pivotal role in fostering a fair, transparent, and supportive environment for students, staff, and faculty across the consortium's member universities. This independent and impartial figure is responsible for mediating conflicts, handling complaints, and advocating for the rights and interests of the community. By facilitating open communication, conducting thorough investigations, and providing confidential support, the Ombudsperson helps resolve disputes amicably and efficiently. Additionally, the Ombudsperson offers valuable insights and recommendations for policy improvements based on recurring issues and observed trends, contributing to the overall enhancement of SEA-EU's policies and procedures. Through these efforts, the Ombudsperson not only addresses individual concerns but also promotes trust, morale, and a sense of fairness within the SEA-EU alliance, aligning with its values of academic excellence, sustainability, and international collaboration.

SEA-EU Ombudsperson





Discover

University of Algarve (Portugal)



Faro. The Capital of Algarve

Faro, the capital of Portugal's Algarve region, boasts a rich history shaped by various civilizations. Initially settled by the Phoenicians in the 4th century BC as Ossonoba, it later flourished under Roman rule. Conquered by the Moors in the 8th century, it was renamed Santa Maria Ibn Harun, becoming a vibrant cultural and commercial hub. Reclaimed by Portuguese King Afonso III in 1249, Faro evolved into an important administrative center. The city endured significant events, including a destructive sack by the English in 1596 and the 1755 Lisbon earthquake, leading to extensive rebuilding. Modernization in the 19th century and the establishment of the University of Algarve in 1979 marked its transformation into a key educational and tourist destination. Today, Faro is celebrated for its historical landmarks, scenic beauty, and vibrant cultural life.



The University

The University of Algarve (UAAlg) is the leading Higher Education institution in the South of Portugal. Recognized for the excellence of its research, the quality of its teaching and the close relations it establishes with society. It offers initial and postgraduate training courses in several training areas and has ample spaces, infrastructures and equipment that provide excellent conditions for study, work, research and socialization.

The UAAlg has been multiplying and consolidating its training offer in its three campuses, two in the city of Faro and one in Portimão, and offers undergraduate and integrated master's degrees, masters and doctorates, which are distributed in its major areas of training.

Scientific research has been a fundamental factor for the development of the University, placing it in a trajectory of national and international affirmation. The excellence of its research and development activities translates into a dense network of partnerships established with universities and R&D institutions from around the world in a wide range of fields.

Discover

Ports of Algarve (Portugal)

Sines and Algarve Port Authority

APS, S.A. is the company responsible for the management of the ports of Sines, Faro and Portimão, thus assuring economic exploitation, maintenance and development, aiming at fulfilling the port authority responsibilities endowed to the company. The Port of Sines has been a case of success in taking advantage of Community financing grants towards the most important projects and greater investment value. It began with the first Community Support Framework (QCA) and was strengthened in the QCA II and QCA III program period, when it registered the highest values in terms of number of projects co-financed, coinciding with one of the major developments of the port.



The Port of Faro

It is an important port infrastructure serving the Algarve region. Located between the Atlantic Ocean and the Mediterranean, it is endowed for serving the region, being essential for the Algarve economy. The port handles rock, iron and tile, sent to Gibraltar, as well as the Algarve's carob, exported to England, the salt from Olhão, the rock-salt from Loulé and the tuna fish exported to Japan.

It is a commercial quay, with 200m length and 8m depth (H.Z.) and a covered storage capacity of 3.500m². It is equipped with three electric cranes, with capacity up to 12 tons.



The Port of Portimão

It is strategically located between the Atlantic and the Mediterranean routes, at only one night navigation from Lisbon. Portimão offers the unique cruise terminal located on the Holidays' Portuguese destination par excellence – the Algarve.



Docapesca – Portos e Lotas, SA

Docapesca's mission as a state-run company is to operate in the fishing sector, specifically in the first sale of catch and related activities. It is therefore responsible for putting in place the appropriate conditions for production and commercialisation by exploring new avenues and competences to ensure the creation of value for the company, its partners and society in general.

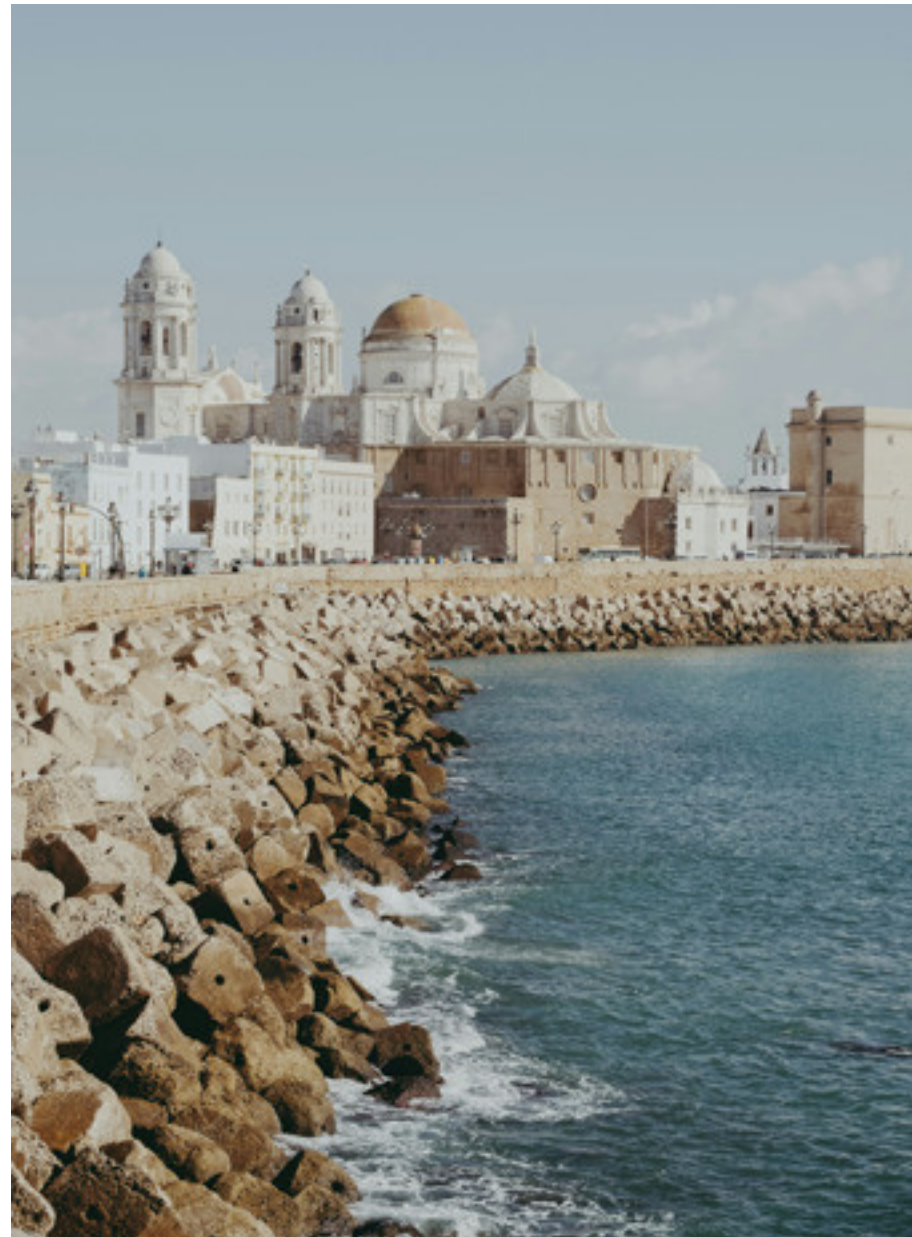




6

**Key Students
Contacts**

Key Students Contacts: **UCA, Spain**



Administrative Contact

Name: Carmen Lopez Valle
Email: jointprmanager@sea-eu.org
Office: Edificio Hospital Real, 102.
Cadiz.

Academic Contact

Name: María del Mar Cerbán
Email: mariadelmar.cerban@uca.es
Telephone: +34 620005954
Office: Escuela Técnica Superior de
Ingeniería ETSIA
Avda. Ramón Puyol s/n
11202 Algeciras

Key Students Contacts: **UNIST, Croatia**



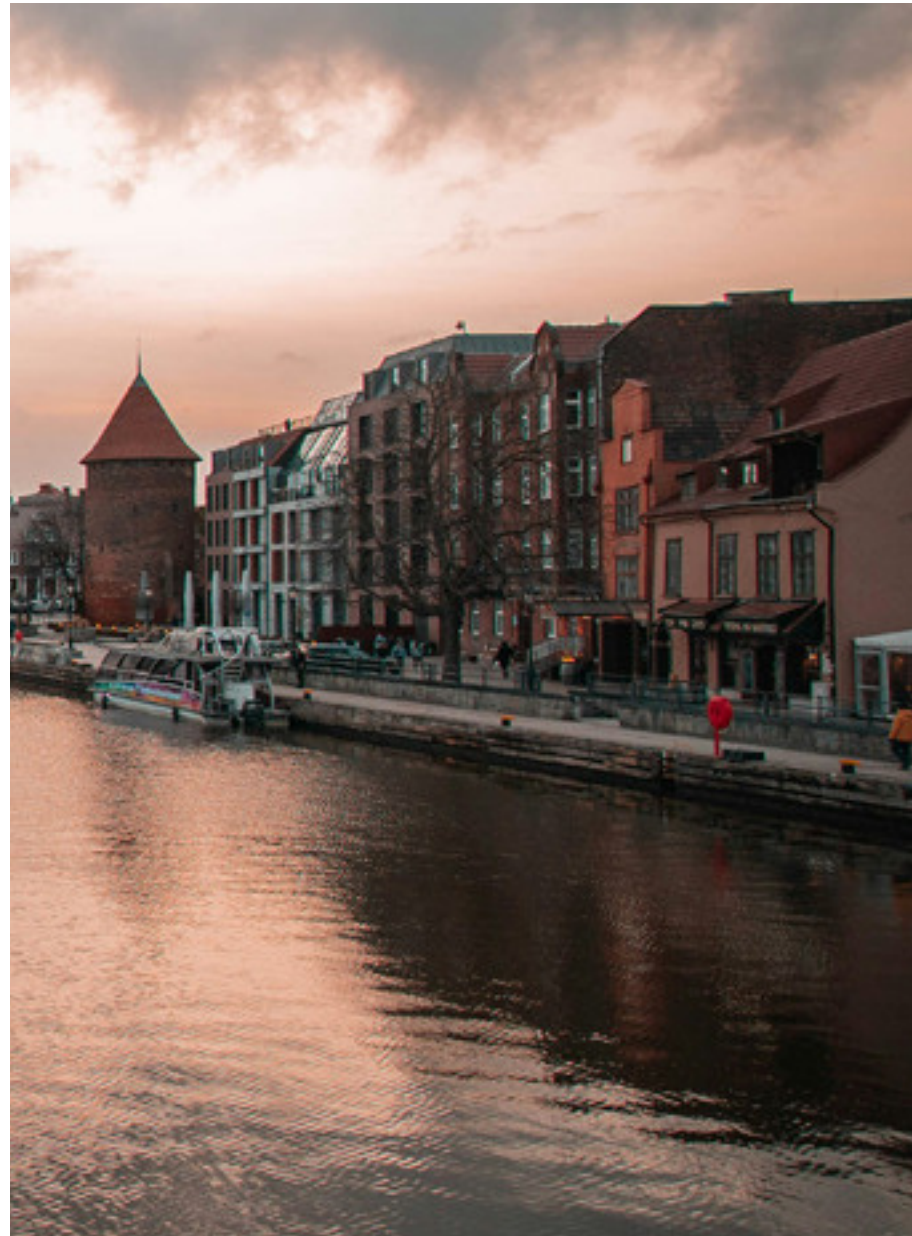
Administrative Contact

Name: Aleksandra Banić
Email: abanic@pfst.hr
Telephone: +385981680544

Academic Contact

Name: Luka Vukić
Email: luka.vukic@pfst.hr
Telephone: +38598549849

Key Students Contacts: **UG, Poland**



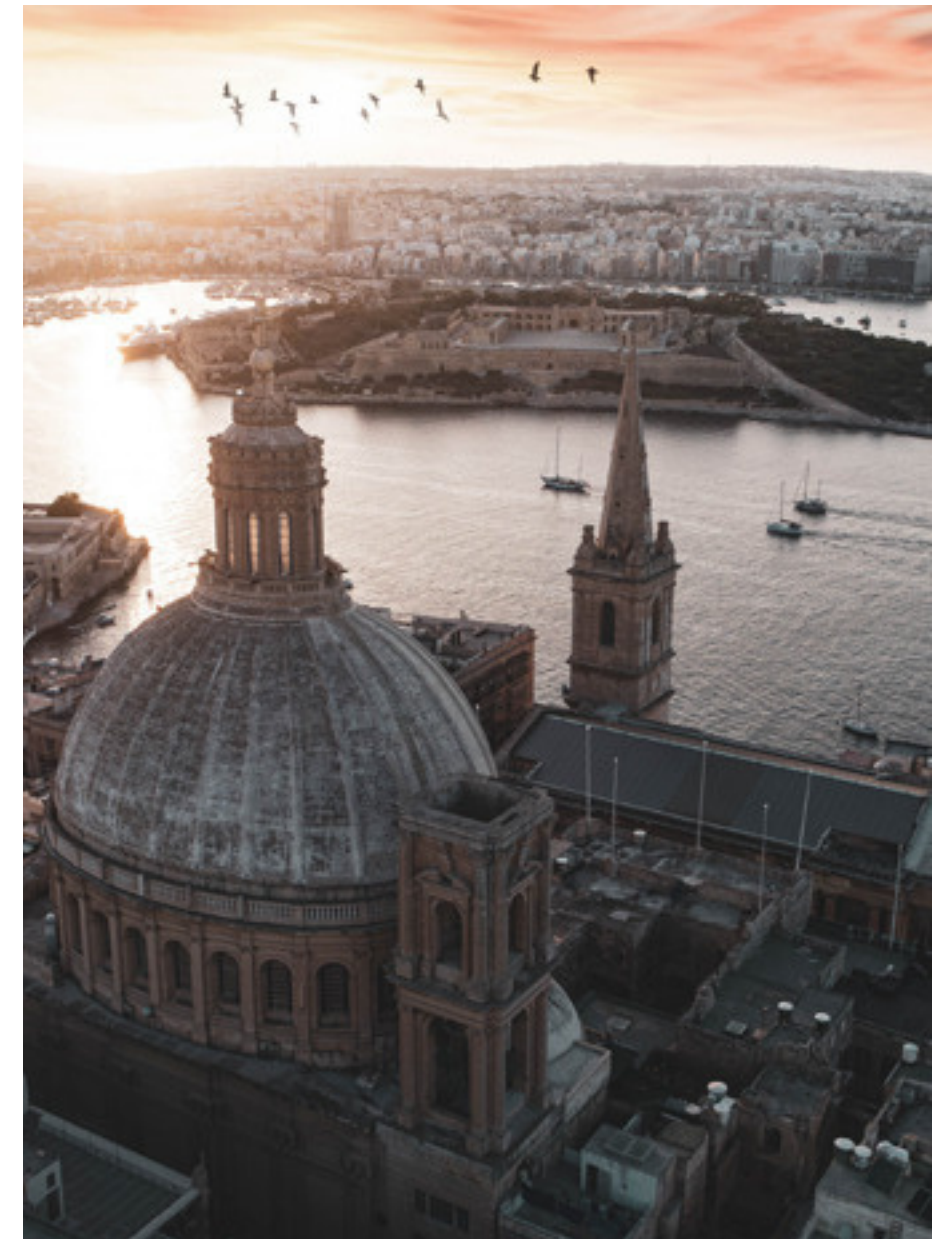
Administrative Contact

Name: Ewa Krukurka
Email: ewa.krukurka@ug.edu.pl
Telephone: +48 58 523 13 68
Office: Faculty of Economics, Armii Krajowej 119/121, Sopot

Academic Contact

Name: Agnieszka Szmelter-Jarosz, Ph.D.
Email: agnieszka.szmelter-jarosz@ug.edu.pl
Telephone: +48 58 523 13 81
Office: Faculty of Economics, Armii Krajowej 119/121, Sopot

Key Students Contacts: **UM, Malta**



Administrative Contact

Name: Anna Schembri
Telephone: +356 2340 3486
Office: Faculty of Laws

Academic Contact

Name: Dr Antoine Grima
Email: antoine.grima@um.edu.mt
Office: Department of Environmental and Resources Law, Room 309, Faculty of Laws, University of Malta

Key Students Contacts:

UALG, Portugal



Administrative Contact

Name: Marleni Azevedo
Email: international@ualg.pt
Telephone: +351 289 800 003
Office: International Relations
and Mobility Office

Academic Contact

Academic Contact
Name: Isabel Simões
Email: dsa@ualg.pt
Telephone: +351 289 800 117
Office: Academic Services

Acknowledgments

The MIPMAL Consortium extends its deepest gratitude to the Academic Committee, whose expertise, guidance, and unwavering dedication were pivotal in the development of this joint programme. Their invaluable contributions have played a key role in ensuring the quality and rigor of the content.

We also wish to thank the Ports of the SEA-EU Alliance, which we had the privilege of visiting throughout this project. Their openness and hospitality provided critical real-world insights that greatly enriched the creation of this manual.

Our sincere thanks also go to the companies that generously shared data and information, offering their support selflessly. Their collaboration was crucial in ensuring the accuracy and relevance of the material.

This manual represents the collective efforts of many, and we deeply appreciate the time, expertise, and resources contributed by everyone involved.

Credits

This handbook has been made possible thanks to the collaborative efforts of numerous contributors. We would like to extend our gratitude to all individuals and organizations who contributed to its development.

We also wish to acknowledge the use of royalty-free images sourced from various websites. These images were crucial in enhancing the visual quality of this handbook. Special thanks to the following websites and photographers:

- Images provided by Jesús Fernández García, via Flickr (<https://www.flickr.com/photos/jfgcadiz/albums/>)
- Images from FreePik.es licensed under free licence for commercial use (<https://www.freepik.es/>)

We are sincerely grateful for the availability of these resources, which have helped us present this content in a more engaging and accessible format.

sea·EU | MIPMAL