

SeaBlue

*Joint Bachelor's Degree in
Sustainable Blue Economy*

Student Handbook

Version 1 (March 2025)



*The sea, the great unifier, is man's only hope.
Now, as never before, the old phrase has a literal
meaning:
We are all in the same boat!*

Jacques-Yves Cousteau



University of Cadiz
(Spain)



University of Parthenope - Naples
(Italy)



University of Gdansk
(Poland)



University of Algarve
(Portugal)



University of NORD
(Norway)



University of Split
(Croatia)



University of Malta
(Malta)



Table of contents

Foreword

SeaBluE welcomes You!

1

Introduction

What is SEA-EU?

Why study the Joint Bachelor **SeaBluE**?

Who is the target audience?

Where to study?

When?

2

Study Programme

SeaBluE at a glance!

1. Purpose of the Programme
2. Learning Approach
3. Curricula
4. Elective Pathways
5. Bachelor Project
6. Mobility
7. Grading System
8. Assessment Methods
9. Joint Diploma Issue

Future Blue Jobs



Table of contents

3

General Procedures, Rights & Responsibilities

Application, Admission & Enrolment
Fees & Scholarships
Onsite & Online Learning Conditions
Coursework Submission Procedure
Re-sits & Re-assessment
Application for Joint Degree & Diploma Supplement

4

Supporting Services

Visa & Permit for Non-European Candidates
Green Travel
Accommodation
Health Insurance
SEA-EU Buddy System
Linguistic Support
Equal Opportunities
Diversity
People with Disabilities
Gender Equality
Psycho-pedagogical Help

This handbook is available on the SEA-EU web page as well as on other SEA-EU online platforms

Table of contents

5

SEA-EU Academic Life

Welcome Week/Sessions
SEA-EU Campuses Facilities
Library Services
Computer Services
Sports
Cultural Activities
SEA-EU Graduates
SEA-EU Ombudsperson

6

Key Students Contacts at:

UCA, Spain
UPN, Italy
UG, Poland
UALG, Portugal
NORD, Norway
UNIST, Croatia
UM, Malta



A person is skateboarding on a checkered floor in front of stone steps. The person is wearing a white t-shirt and dark pants. The skateboard is on the ground. The background shows a stone wall and a concrete path.

Sea • EU

Disclaimer: To avoid this document becoming out of date, links to other documents containing more detailed information on each subject will be included. Contact your local technical officer to ask for any more information about any of the points talked about in the handbook and they will be happy to advise you.

Foreword

Dear students,
the purpose of this handbook is to provide you with detailed information on the regulations of the Joint Bachelor's Programme in Sustainable Blue Economy (**SeaBlueE**), coordinated by the University of Cadiz (Spain, UCA) and delivered by the SEA-EU partners: University of Naples Parthenope (Italy, UPN); University of Gdansk (Poland, UG); University of Algarve (Portugal, UAlg); NORD University (Norway, NORD); University of Split (Croatia, UNIST); and, University of Malta (Malta, UM).

This will serve to guide you, as a student interested in SeaBlueE, from the moment you apply for admission to the moment you receive your joint Diploma. This document provides an overview of the programme's main objectives and course structure, as well as the current regulations regarding the academic courses, internships, and the Bachelor's project.

May this new academic cycle inspire you to learn, grow, and leave your mark. We wish you a journey full of success and discoveries!

To have a whale of a time!

SeaBlueE Consortium

SeaBluE welcomes You!

Welcome to the SEA-EU community and the beginning of your exciting journey in the International Bachelor's in Sustainable Blue Economy!

This programme has been designed within the SEA-EU Alliance, a collaboration between seven European universities, and represents a joint commitment to train the next generation of leaders in marine sustainability and the blue economy. Your choice to study this programme marks the beginning of a unique educational journey, aimed at creating a positive and lasting impact on our seas and the communities that rely on them.

Throughout this programme, you will have the opportunity to work with peers and faculty from across Europe, benefiting from the knowledge and experience of our partner universities. Together, we will explore critical topics such as marine resource management, environmental policies, sustainable innovation, and strategies to drive coastal economies that respect the planet's ecological boundaries. This is an exciting and challenging time. With every step, you will be acquiring skills and perspectives that will prepare you to tackle the complex issues facing our marine environment. We encourage you to make the most of every learning opportunity, from international placements to interdisciplinary projects, and to actively contribute your ideas and energies towards the advancement of a truly sustainable blue economy.

Welcome to SeaBluE and to this unforgettable journey!





1

Introduction

What is SEA-EU?
Why study the Joint Bachelor SeaBlue?
Who is the target audience??
Where to study?
When?

What

... is SEA-EU?

SEA-EU is a geographically-balanced and enlarged university alliance with a coastal and marine-maritime character as its hallmark. It aims to foster a cohesive and innovative educational ecosystem, leveraging the collective strengths and resources of its member universities to enhance European higher education and create impactful opportunities for all its stakeholders. Three specific objectives are key on the SEA-EU alliance:

1

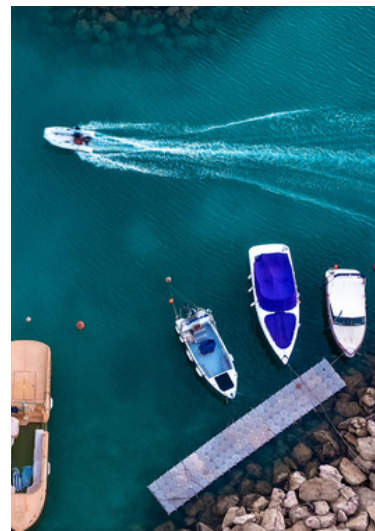
#Develop and implement an **integrated long-term joint strategy**

2

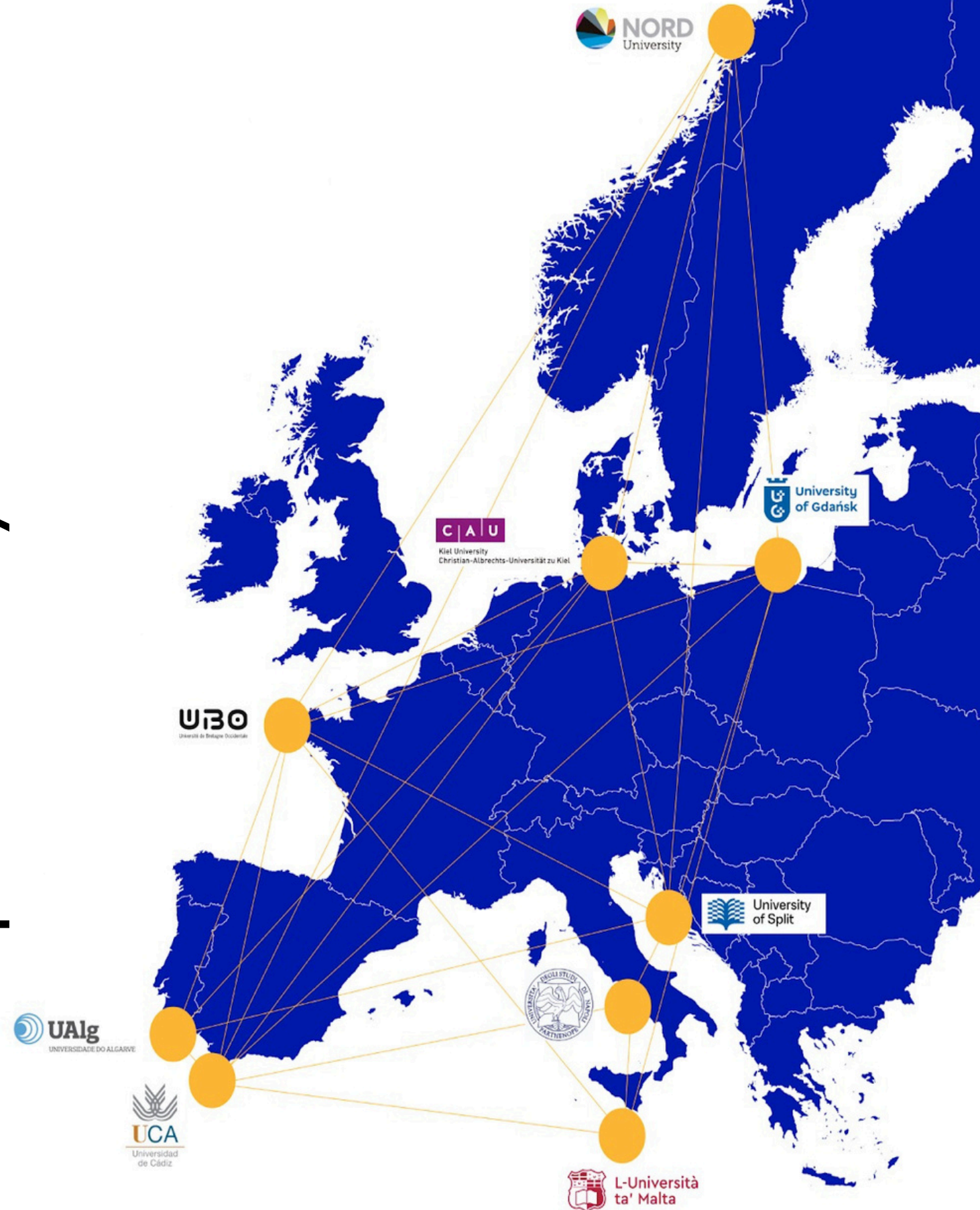
#Establish a **European higher education inter-university 'campus'**

3

#Build solid **European knowledge-creating teams**



The European University of the Seas "SEA-EU"



Why

... study the Joint Bachelor's Degree in Sustainable Blue Economy?

In today's rapidly changing world, the importance of sustainability has never been more critical, especially in relation to our oceans and marine resources. The Sustainable Blue Economy is an expanding field that emphasises the responsible use of ocean resources to drive economic growth, enhance livelihoods, and safeguard environmental sustainability.

A Joint Bachelor's Degree in Sustainable Blue Economy provides a distinctive and comprehensive educational experience, bringing together the strengths of multiple academic institutions and offering a broad, interdisciplinary approach. Through this programme, students develop a deeper understanding of the intricate relationships between marine ecosystems, economic development, and environmental stewardship.

Pursuing this degree equips students with the knowledge and skills needed to tackle the pressing challenges facing our oceans, such as overfishing, marine pollution, and climate change. It also opens up a wide range of career opportunities in sectors such as marine conservation, sustainable fisheries, renewable ocean energy, and maritime policy, all of which contribute to a more sustainable future.

Sustainable
Sea
Blue
—
EU
Economy

SEA-EU's Bachelor Degree in Sustainable Blue Economy (SeaBlueE) is built on five main principles:

1. International and intercultural framework
2. More applied orientation
3. Holistic vision and interdisciplinary
4. Training in adaptive and transferable skills
5. Career Opportunities



Who

... is the target audience?

There is great concern about issues such as climate change, overfishing, pollution and habitat destruction in the ocean, as well as a growing recognition of the relevance of sustainable practices in the blue economy. The SeaBluE Degree will prepare professionals to address these global challenges while seizing opportunities for innovation and entrepreneurship in the ocean. Building on holistic vision, adaptability and environmental responsibility, SeaBluE graduates will be in an optimal position to access the growing labour market of the blue economy, from entrepreneurship or through employability in government agencies, non-profit organisations, private sector and research institutions or the private sector.

In short, a Joint Bachelor's Degree in Sustainable Blue Economy offers a unique and timely educational pathway that equips students with the knowledge, skills and perspective needed to address the goal of sustainable use of the oceans and the marine resources. The co-creation of a SeaBluE Degree meets the increasing demand for professionals in the blue economy sector, with a training in line with the **United Nations Sustainable Development Goals (SDGs)**.



Offering a comprehensive curriculum that equips students with relevant knowledge and practical skills related to sustainability and blue economy practices. Fostering a mindset of continuous learning and adaptation to new challenges and developments in the field of sustainable blue economy. Ensuring inclusivity: Creating opportunities for diverse groups of students to access education and participate in addressing global challenges related to ocean sustainability.

The oceans play a crucial role in regulating the Earth's climate, and sustainable blue economy practices can help mitigate the impacts of climate change. For example, marine renewable energy technologies can contribute to reducing greenhouse gas emissions, while coastal ecosystem restoration projects can enhance climate resilience.



The sustainable management of marine resources promoted by a degree in Sustainable Blue Economy aligns with SDG 12 by encouraging responsible consumption patterns, reducing waste and pollution, and promoting sustainable production practices in industries such as fisheries and aquaculture.

The oceans play a crucial role in regulating the Earth's climate, and sustainable blue economy practices can help mitigate the impacts of climate change. For example, marine renewable energy technologies can contribute to reducing greenhouse gas emissions, while coastal ecosystem restoration projects can enhance climate resilience.



This goal focuses on conserving and sustainably using marine resources. A degree in Sustainable Blue Economy directly contributes to SDG 14 by equipping students with the knowledge and skills to promote marine conservation, manage fisheries sustainably, protect marine biodiversity, and reduce marine pollution.

The health of marine ecosystems and coastal habitats directly affects terrestrial biodiversity and ecosystem services. A degree in Sustainable Blue Economy can contribute to SDG 15 by promoting the conservation and restoration of coastal ecosystems and by reducing land-based pollution that affects marine environments.





Where

... to study?

Seven Universities of the SEA-EU Alliance participate in the SeaBluE Consortium. These seven universities are part of the European University of the Seas (SEA-EU), one of the 65 European Universities that will become the transnational universities of the future. The seven Universities that have co-created the bachelor programme are:

- University of Cadiz (Spain). Coordinating institution
- University of Naples Parthenope (Italy)
- University of Gdansk (Poland)
- University of Algarve (Portugal)
- NORD University (Norway)
- University of Split (Croatia)
- University of Malta (Malta)

When

Starting academic year 2025/2026

Cádiz. The Oldest City in Western Europe

It is renowned for its rich history and strategic maritime location, which made it an important trading port from Phoenician times through to trade with the Americas in the 18th century.

Set on a narrow peninsula embraced by the Atlantic, Cadiz boasts a rich history that is reflected in its architecture and winding streets. The city pulses with life as both locals and visitors immerse themselves in its vibrant markets, lively plazas, and captivating cultural offerings.

The lively Cadiz lifestyle harmonizes with the laid-back rhythm of the sea, inviting leisurely strolls along sun-kissed beaches and embracing the rich tapestry of Andalusian heritage through flamenco rhythms and delectable seafood cuisine.



The Campus. CASEM

One of the most outstanding features of this Faculty is its close connection to the social, business, and industrial realities of its surroundings, as well as its strong commitment to serving society and the productive system as a whole. To achieve this, it has an interdisciplinary and versatile structure, made up of professionals who are constantly updating their knowledge in their fields of study and research.

The Faculty of Marine and Environmental Sciences is organised around highly qualified research groups with a wide range of specialisations, including oceanographers, environmental scientists, engineers from various disciplines, chemists, physicists, biologists, geologists, legal experts, specialists in geographical analysis, IT professionals, and more. This diversity enables the Faculty to train future professionals in the fields of environmental and marine sciences, while also addressing challenges arising within these areas of knowledge.

Discover

University of Cádiz
Campus of Puerto Real
(Spain)

2

Study Programme

SeaBluE at a glance!

Purpose of the Programme

Learning Approach

Curricula

Elective Pathways

Bachelor Project

Mobility

Grading System

Assessment Methods

Joint Diploma Issue

Future Jobs



SeaBluE at a glance!

Enrolling in the SeaBluE Bachelor Programme will launch you on an educational voyage. Enrolling in the SeaBluE Bachelor's programme will take you on an exciting educational journey, with the Sea as your source of inspiration. Through this approach, you will explore how to integrate the principles of sustainability and the blue economy, learning to tackle the unpredictable challenges of today's economic landscape with the same skill and determination as seasoned sailors navigating the ever-changing conditions of the ocean.

The degree's structure has been thoughtfully crafted with the active collaboration of SEA-EU participating institutions, creating a dynamic environment for learning and skill development that seamlessly connects academia with the business world.

Y1. Semester 1&2: Core Module (60 ECTS)

Y2. Semester 3&4: Tool Module (60 ECTS)

Y3. Semester 5&6: Expertise Module (60 ECTS)

Option 1. Research oriented

Research bachelor project (15 ECTS)

Option 2. Professionally oriented

Internship (10 ECTS) + Bachelor project (5 ECTS)



Purpose of the Programme

The Bachelor's degree in Sustainable Blue Economy will provide students with fundamental knowledge about the marine environment and its intrinsic links to economic and social activity. Holistic, interdisciplinary, and adaptive training will be used as a launching pad for sustainable growth and innovation.

SeaBluE offers a fully integrated programme with the following seven elements of jointness:

1. Joint design and joint delivery.
2. Joint academic governance structure and joint administration and financial management.
3. Joint policy for admission, selection, recognition, teaching and training, supervision, monitoring, assessment, mobility, traineeships, and bachelor project procedures, offering a full range of integrated mobility within SEA-EU.
4. Joint student support.
5. Joint resources, fostering open educational resources, open science and open data to our communities and the world at large.
6. Joint transparency and documentation procedures.
7. Joint internal quality assurance system.



Learning Approach

Graduates will acquire a broad knowledge of the fundamental principles of marine sciences and the sustainable blue economy, including the interdependency of marine ecosystems, ocean industries, and societies. They will be able to identify and interpret challenges associated with the economic value of the oceans, describe alternative economic approaches, use marine environmental and socio-economic analysis tools, manage multidisciplinary data, provide frameworks for reconciling conflicting uses of ocean resources, analyse policies for sustainable ocean use, and develop awareness of environmental and socio-economic problems related to the blue economy with a focus on sustainability and ethical commitment.

The philosophy of the programme revolves around integrating a comprehensive understanding of marine sciences with sustainable economic practices to promote the long-term health and viability of ocean ecosystems and the communities that depend on them.

Curricula

Year by year

Y1. Core Module. 60 ECTS

Learning the Ropes

SBE101. Marine Ecosystems & Biodiversity	5 ECTS
SBE102. Ocean Functioning	5 ECTS
SBE103. Applied Mathematics	5 ECTS
SBE104. Foundations of Economics	5 ECTS
SBE105. Introduction to Sustainable Blue Development	5 ECTS
SBE106. Soft & Academic Skills	5 ECTS
SBE107. Marine Natural Capital & Ecosystem Services	5 ECTS
SBE108. Impact of Human Activities on the Ocean	5 ECTS
SBE109. Blue Business Management	5 ECTS
SBE110. Marine & Maritime Governance, Laws & Regulations	5 ECTS
SBE111. Ecological Economics	5 ECTS
SBE112. Statistics	5 ECTS

Y2: Toolbox Module. 60 ECTS

Running a Tight Ship

SBE201. Geographic Information Systems	5 ECTS
SBE202. Digital Data Compilation, Analysis & Visualisation	5 ECTS
SBE203. Sustainable Blue Entrepreneurship & Innovation	5 ECTS
SBE204. Climate Change	5 ECTS
SBE205. Circular Blue Economy	5 ECTS
SBE206. Models for Environmental & Economic Systems	5 ECTS
SBE207. Remote Sensing Data & Techniques	5 ECTS
SBE208. Marine Spatial Planning (MSP) & Integrated Coastal Zone Management (ICZM)	5 ECTS
SBE209. Introduction to Blue Industries	5 ECTS
SBE210. Environmental Accounting	5 ECTS
SBE211. Foundations of Finance	5 ECTS
SBE212. Sustainability Reporting	5 ECTS

Y3. Expertise Module. 60 ECTS

Charting the Course

Pathway 1. *Blue Sustainability Accounting, Management and Planning (UPN/UG)*

Pathway 2. *Conservation and Sustainable Use of Marine Resources (UG)*

Pathway 3. *Human Impact in the Arctic (NORD)*

Pathway 4. *Sustainable Port-Tourism Cities (UNIST)*

Pathway 5. *Blue Management: Accounting, Conservation and Restoration (UCA)*

Pathway 6. *Blue Industries: Tourism and Seafood (UAlg/UCA)*

Y3. Pathway 1. *Blue Sustainability* *Accounting, Management and* *Planning (UPN/UG)*

SBE311-P1. Landscape Planning & Management	5 ECTS
SBE312-P1. Life Cycle Assessment	5 ECTS
SBE313-P1. Environmental Monitoring	5 ECTS
SBE314-P1. Ocean Ecology & Accounting	5 ECTS
SBE315-P1. Aquaculture & Food Security	5 ECTS
SBE316-P1. Sustainable & Climate Finance	5 ECTS
SBE317-P1. Environmental & Urban Planning	5 ECTS
SBE318-P1. Maritime Sustainable Supply Chains	5 ECTS
SBE319-P1. Operation Planning & Management	5 ECTS
SBE401-P1. Option 1. Research oriented Research bachelor project	15 ECTS
SBE402-P1. Option 2. Professionally oriented Internship + Bachelor project	10 ECTS 5 ECTS

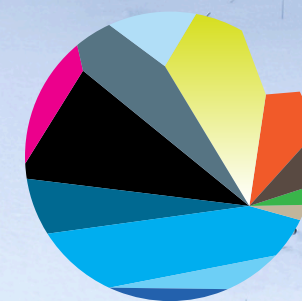


Y3. Pathway 2. Conservation and Sustainable Use of Marine Resources (UG)

SBE321-P2. Protection of the Marine Environment	5 ECTS
SBE322-P2. Ecological Assessment of Aquatic Environments	5 ECTS
SBE323-P2. Sustainable Fisheries Management	5 ECTS
SBE324-P2. Introduction to Marine Biotechnology	5 ECTS
SBE325-P2. Leadership & Communication	5 ECTS
SBE326-P2. Fish Biology	5 ECTS
SBE327-P2. Integrated Aquaculture	5 ECTS
SBE328-P2. Specialised Workshop at Sea & in the Coastal Zone	5 ECTS
SBE329-P2. Mining & Renewable Energy	5 ECTS
SBE401-P2. Option 1. Research oriented Research bachelor project	15 ECTS
SBE402-P2. Option 2. Professionally oriented Internship + Bachelor project	10 ECTS 5 ECTS

Y3. Pathway 3. *Human Impact in the Arctic (NORD)*

SBE331-P3. Human Health & Physical Activity related to the Sea; Blue sports	5 ECTS
SBE332-P3. Sustainable Coastal Tourism	5 ECTS
SBE333-P3. Introduction to Marine Biotechnology	5 ECTS
SBE334-P3. Sustainable Fisheries Management	5 ECTS
SBE335-P3. Integrated Aquaculture	5 ECTS
SBE336-P3. Marine Ecosystem Restoration	5 ECTS
SBE337-P3. Geopolitics in the Arctic	
SBE338-P3. Arctic leadership	5 ECTS
SBE339-P3. Human Impact in the Arctic	
SBE401-P3. Option 1. Research oriented Research bachelor project	15 ECTS
SBE402-P3. Option 2. Professionally oriented Internship + Bachelor project	10 ECTS 5 ECTS



NORD
University



University
of Split

Y3. Pathway 4. Sustainable Port- Tourism Cities (UNIST)

SBE341-P4. Sustainable Shipping & Ports	5 ECTS
SBE342-P4. Sustainable Coastal Tourism	5 ECTS
SBE343-P4. Urban Economics	5 ECTS
SBE344-P4. Migrations & Coastal Populations	5 ECTS
SBE345-P4. Introduction to Marine Biotechnology	5 ECTS
SBE346-P4. Human Health & Physical Activity related to the Sea; Blue Sports	5 ECTS
SBE347-P4. Socio-economic & Environmental Monitoring	5 ECTS
SBE348-P4. Environmental Marketing & Social Awareness	5 ECTS
SBE349-P4. Coastal Resource Strategic Management	5 ECTS
SBE401-P4. Option 1. Research oriented Research bachelor project	15 ECTS
SBE402-P4. Option 2. Professionally oriented Internship + Bachelor project	10 ECTS 5 ECTS

Y3. Pathway 5. Blue Management: Accounting, Conservation and Restoration (UCA)

SBE351-P5. Policy, Legal & Regulatory Framework for Blue Management	5 ECTS
SBE352-P5. Data Sources & Processing Tools for Blue Management	5 ECTS
SBE353-P5. Socio-ecological Monitoring	5 ECTS
SBE354-P5. Marine Ecosystem Accounting	5 ECTS
SBE355-P5. Marine Ecosystem Conservation	5 ECTS
SBE356-P5. Marine Ecosystem Restoration	5 ECTS
SBE357-P5. Social Dimension in the Blue Management	5 ECTS
SBE358-P5. Project Management	5 ECTS
SBE359-P5. Innovation & Strategic Development in Blue Management	5 ECTS
SBE401-P5. Option 1. Research oriented Research bachelor project	15 ECTS
SBE402-P5. Option 2. Professionally oriented Internship + Bachelor project	10 ECTS 5 ECTS



Y3. Pathway 6. Blue Industries: Tourism and Seafood (UAlg/UCA)

SBE361-P6. Sustainable Blue Industries: Tourism & Seafood	5 ECTS
SBE362-P6. Social Dimension of Blue Industries	5 ECTS
SBE363-P6. Policy & Regulatory Framework in Blue Industries	5 ECTS
SBE364-P6. Strategy Management	5 ECTS
SBE365-P6. Life Cycle in Blue Industries	5 ECTS
SBE366-P6. Integrated Aquaculture & Sustainable Fisheries	5 ECTS
SBE367-P6. Marketing & Product Development in Blue Tourism	5 ECTS
SBE368-P6. Seafood Processing & Product Development	5 ECTS
SBE369-P6. Blue Industries Project Management	5 ECTS
SBE401-P6. Option 1. Research oriented Research bachelor project	15 ECTS
SBE402-P6. Option 2. Professionally oriented Internship + Bachelor project	10 ECTS 5 ECTS

Bachelor Project

Choosing the Pathway

The Expertise pathways in the third year offer two different options for the final project:

Option 1: Research oriented (Research bachelor project = 15 ECTS)

Option 2: Professionally oriented (Internship = 10 ECTS + Bachelor project = 5 ECTS)

Option 1: Research-Oriented Bachelor Project

Research Bachelor Project = 15 ECTS

Project Requirements: The project must be an original piece of work (minimum 5,000 words) undertaken by the student. Accepted project types include: Literature Review/Conceptual Project and Critical Assessment of the Existing Literature on a Given Topic. The compulsory sections are:

1. Abstract (200 words)
2. Keywords (5)
3. Body (with specific diagram for scientific projects):

In the case of experimental works, the body will be structured as follows:

- a. Introduction
 - b. Literature Review/Background Theory
 - c. Objectives
 - d. Methodology
 - e. Results and Discussion
 - f. Conclusion
4. Reference List

Compulsory Co-Supervision:

At least two supervisors from different universities, with one supervisor being a professor from the student's chosen pathway university.

Once students have completed their bachelor project and received approval from their supervisor, they must submit their project and apply for the oral defence.

Oral defence: F2F and hybrid mode, located at the pathway university where the student is studying Y3. The Academic Steering Committee will determine the duration of the oral defence: presentation and questions & answers session.

Project Assessment Board:

Comprising three academics from at least two universities.

Option 2: Professionally-Oriented

Internship = 10 ECTS

+

Bachelor project = 5 ECTS

Internship Details:

Students may undertake internships in public/private sectors, NGOs, or universities. A pool of potential providers, showing their interest via a commitment letter, is established for each institution. Internship selection by students is based on academic record and requires approval from the pathway coordinator.

Supervision: No co-supervision is required. The project will be supervised by an academic from the pathway university, preferably the same academic who supervised the internship. An external mentor from the industry may optionally act as a co-supervisor.

Project Requirements: The project must be an original piece of work (minimum: 2,000 words and maximum: 5,000 words) undertaken by the student. It should be focused yet practical, addressing a specific aspect of an industry challenge or task. The compulsory sections are:

1. Abstract (200 words)
2. Keywords (5)
3. Body (with the following suggested structure):
 - a. Introduction
 - b. Literature Review/Background Theory
 - c. Objectives
 - d. Methodology
 - e. Industrial Application
 - f. Results and Discussion
 - g. Conclusion
4. Reference List

Clarifications. Bachelor project delivery and oral defence must be completed before the end of July. An extension may be granted upon approval by the Project Assessment Board.



Discover

University of Naples (Italy)



UNIVERSITÀ DEGLI STUDI DI NAPOLI
PARTHENOPE

Naples. Under the shadow of Vesuvius

Kissed by the sea and the sun, Naples is a city of overwhelming beauty and vibrancy.

The capital of Campania lies in the bay of the same name next to the volcano Vesuvius and offers a spectacular view as far as the islands of Capri, Ischia and Procida. The historical centre has been recognised by UNESCO as a World Heritage Site because of its monuments that best represent European and Mediterranean culture.

The role of Naples as the cradle of Italian culture, including literature, theatre, music and cuisine, should also not be forgotten. The latter is, to all intents and purposes an art: one of the world's best-loved delicacies, pizza, was born here.



The University

Overlooking the legendary Bay of Naples, the University of Naples Parthenope combines storied tradition with modern academia in the heart of Southern Italy.

Parthenope University of Naples was established in 1919 by the Vice Admiral Leonardi Cattolica with the name "Regio Istituto Superiore Navale". Born as an institute of higher education specialized in maritime studies: marine science, maritime economics and logistics. In 1999, the departments of Law, Engineering and Sports Sciences were added to the two long-standing ones of Economics and Nautical Science which jointly brought the Institute significant growth in the number of students. Then, the name of the Institute officially changed to "Parthenope University of Naples". From July 2013, a new set of study curricula was introduced and also a department-based organization for research. University is committed to the pursuit of social, cultural and economic development.

Mobility

SeaBluE includes a mandatory 12-month mobility period, usually spanning two semesters in Y3 as the recommended standard option. In the case that a student opts for the combination of UCA (Y1) and UAlg (Y2) under the mobility programme financed by Erasmus+, the mobility between these two universities can be considered sufficient to meet the programme's compulsory mobility requirement upon request and approval by the Academic Steering Committee.

Students should rank the pathways in order of preference by the end of the first year. The assignment of the final pathway and university for the third year will occur at the conclusion of the first year, based on students' academic performance and their chosen preferences, and will depend on the number of places available. Timely notification of their assignment will be provided to students.



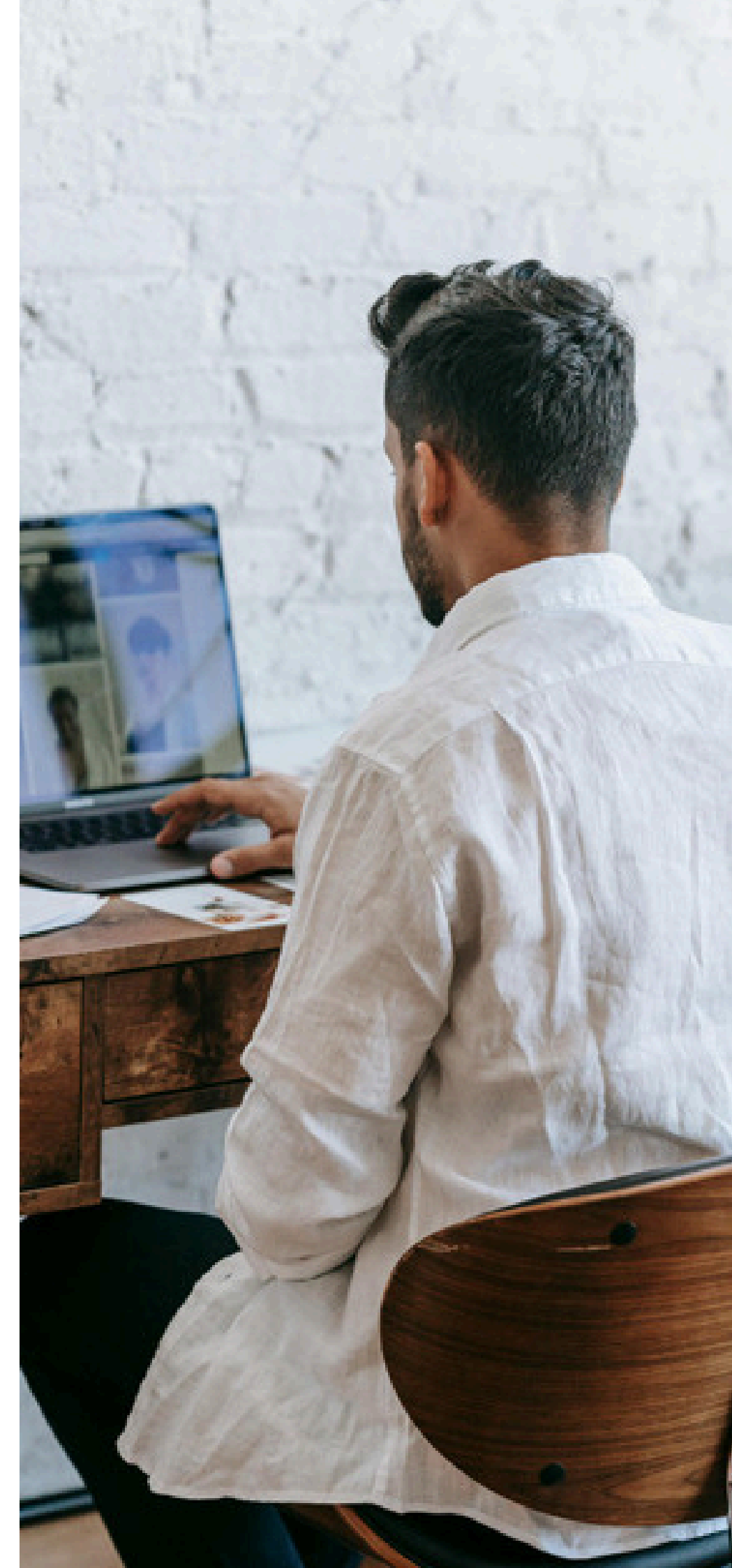
Grading System

Your performance, examination and assessment results are given using the ECTS system with a corresponding percentage grade where this is deemed necessary by the lecturer.

- 0 – 49% of the total score - **Fail (F)**
- 50 – 59% of the total score - **Sufficient (E)**
- 60 – 69% of the total score - **Satisfactory (D)**
- 70 - 79% of the total score - **Good (C)**
- 80 - 89% of the total score - **Very Good (B)**
- 90 – 99% of the total score - **Excellent (A)**
- 100% of the total score - **Exceptional (A+)**

The SEA-EU universities have developed a general grade conversion table, based on the grading practices of the partner universities. The table below can assist you, if necessary, in translating your score into a “local” grade.

ECTS Grade	FAIL	SUFFICIENT	SATISFACTORY	GOOD	VERY GOOD	EXCELLENT	EXCEPTIONAL
	FX - F	E	D	C	B	A	A+
SEA-EU Joint Programmes	0 – 49%	50 – 59%	60 – 69%	70 – 79%	80 – 89%	90 – 99%	100%
CROATIA	1	2		3	4	5	/
FRANCE	0 – 9.9 (<10 Insufficient;<7 Very insufficient)	10 – 10.9(10 Average)	11 - 11.9	12 – 13.9(12 Satisfactory)	14 – 15.9	16 – 17.9(>16 Very good, excellent)	18 - 20
GERMANY	4,1 – 5,0	3,6 – 4,0	3,1 – 3,5	2,1 – 3,0	1,6 – 2,0	1,0 – 1,5	-
ITALY	0 – 17.9	18 - 22	23 - 25	26 - 27	28 - 29	30	30L
MALTA	F 0–44%	PG*: 45 - 49	D+ UG**: 50–54D UG: 45–49 PG 50 - 54	C+ UG:69–60C UG - 55–59 PG - 55 - 69	B+ UG - 75–79B UG - 70–74 PG -70-79	UG - 80–89PG 80-100	90 - 100
NORWAY	F	E	D	C	B	A	A
POLAND	2(Fail 50% and less)	3.0(Pass – 51%–60%)	3.5(Satisfactory – 61%–70%)	4.0(Good – 71%–80%)	4.5(Very good – 81%–90%)	5(Excellent – 91% and more)	
		satisfactory (3.0) (average of grades up to 3.20)	satisfactory plus (3.5) (average of grades 3,21 – 3,70)	good (4.0) (average of grades 3,71– 4,20)	good plus (4.5) (average of grades 4,21 – 4,50)	very good (5) (average of grades 4,51 – 5,00)	
PORTUGAL	0 - 9	Passing 10 - 11	Satisfactory 12 -13-	Good 14-15	16 - 17	18 - 20	
SPAIN	0 – 4,9(Suspensio – failed)	5 – 5,9 (Aprobado – passed)	6 – 6,9(Aprobado – passed)	7 – 7,9 (Notable – credit)	8 – 8,9 (Notable – credit)	9 – 10 (Sobresaliente – outstanding)	9-10 MH (Distinction – limited to 5% of students)



Assessment Methods

Your progress, related to both activities and achievement of the programme learning outcomes (PLOs), will be closely monitored throughout the study programme.

During each course, your active participation (discussion, self-assessments etc.) is expected as well as fulfilment of tasks (presentations, seminars, etc.) as define in each course.

Lecturers will keep records of your activities, as they will be one of the evaluation criteria. In addition, your competencies will be formally assessed in each course according to the procedures and criteria defined in the course syllabi. You will be permanently informed about your progress and achievements. Final grade will be the result of the activities, tasks achievements as well as formal assessments.



The consortium ensures that courses passed at any one of the participating universities are fully recognised by the other universities participating in the bachelor's programme.

During the SeaBlue Bachelor's programme, you will be assessed and examined by different lecturers from different institutions. The procedures jointly devised and agreed upon will enable SeaBluE teaching staff to ensure fairness, consistency and equity in their assessment procedures.

In case of disagreement over a grade, you will first be invited to discuss with the Academic coordinator. Should the problem persist, a reviewers board will be constituted for resolution.



Joint Diploma Issue

The joint degree awarded shall be testified by the issuance of a joint Bachelor's diploma and joint diploma supplement.

UCA, as the Coordinator University of the consortium, will issue your Diploma, on behalf of the rest of the universities of the consortium, and will provide you with the diploma supplement.

The diploma supplement shall follow the template developed by the European Commission, the Council of Europe, and UNESCO/CEPES and shall be adapted to any further specifications in the national legislation of the issuing university, where applicable.



Marine Conservationist

Working with non-profit organisations, government agencies, or research institutions to protect and conserve marine ecosystems, endangered species, and biodiversity

Aquaculture Manager

Overseeing sustainable aquaculture operations, including fish farming, shellfish cultivation, and seaweed farming, to meet growing demand for seafood while minimising environmental impacts

Environmental Consultant

Providing consulting services to businesses, governments, and NGOs on environmental issues related to the marine environment, such as pollution prevention, habitat restoration, and environmental impact assessments

Coastal Planner

Collaborating with government agencies, urban planners, and communities to develop sustainable coastal development plans that balance economic development with environmental conservation and social equity

Marine Resource Economist

Conducting economic analyses of marine resource utilisation, evaluating the costs and benefits of different management strategies, and informing decision-makers about the economic value of marine ecosystems

Fisheries Manager

Managing fisheries resources sustainably, overseeing fishing quotas, enforcing regulations, and implementing conservation measures to ensure the long-term viability of fish stocks

Environmental Policy Analyst

Analysing environmental policies and regulations related to marine and coastal management, advocating for sustainable practices, and advising policymakers on effective strategies for conservation and resource management

Sustainable Business Consultant

Working with companies in the marine industry to develop and implement sustainable business practices, such as reducing waste, improving energy efficiency, and adopting eco-friendly technologies

Oceanographer

Studying physical, chemical, and biological processes in the ocean, conducting research on climate change, ocean circulation, and marine biodiversity, and contributing to our understanding of marine ecosystems and their resilience to environmental stressors

Blue Innovation Entrepreneur

Launching startups or innovative projects that address challenges in the sustainable blue economy, such as developing new technologies for marine conservation, aquaculture, ocean monitoring, or waste management

Marine Ecotourism Manager

Managing marine ecotourism operations, including wildlife tours, diving excursions, and eco-friendly accommodations, while minimising the environmental impact and promoting conservation awareness

Renewable Energy Specialist

Researching and developing renewable energy technologies such as offshore wind, tidal energy, and wave energy, to harness the power of the ocean while minimising environmental impacts



Future Jobs



Discover

University of Gdańsk (Poland)



City of Freedom and Solidarity

Gdańsk was a city where some of the most important events for the world and Europe took place. A city with over 1,000 years of tradition, one of the largest ports on the Baltic Sea. It is a unique metropolis that has always been imbued with the spirit of freedom and courage. The Latin saying *Nec Temere, Nec Timide*, the motto of Neptune's City, best reflects the character of this once Hanseatic city. It is a timeless motto that should guide each and every one of us: courageously, but with caution.

Gdańsk, together with neighbouring Gdynia and Sopot, forms a common organism, the "Tricity", and together they create an infinite number of possibilities and original tourist proposals. As a city born of the sea and dreams, Gdynia has become one of the most important Baltic ports and shipbuilding industries. Situated right on the coast, surrounded by cliffs and forests, it is not only a great place to relax, but also to learn about the



history of the reborn independent Poland. Here, too, you will taste dishes not only traditionally associated with the sea, but cuisine from all over the world. The symbol of Sopot is the longest wooden pier in Europe. More than a century old construction with characteristic white railings enters almost half a kilometre into the waters of the Bay of Gdansk.



The University

The University of Gdańsk may not be the oldest, but it has already established itself as one of the most important scientific centres in Poland and on the Baltic Sea. In the sea your way shines through us from the beginning and this is the main idea behind our work, goals and scientific activities.





3

General Procedures, Rights and Responsibilities

Application, Admission & Enrolment
Re-sits & Re-assessment
Coursework Submission Procedure
Fees & Scholarships
Joint Degree & Diploma Supplement



Joint Platform for Application, Selection and Admission

SEA-EU



SEA-EU participating Universities



Joint Administration Office



Joint Administration Office



Joint Administration Office



Joint Administration Office



Academic Steering Committee

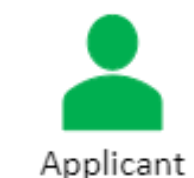
Application

Documents required

- Recent photograph (Photographs serve an identification purpose. Therefore, 'selfies,' casual photos, or any other photos that do not meet the formal requirements of official documents will NOT be accepted).
- Scanned copy of a valid Passport/ID Card document.
- Scanned copy of degree or certificate of secondary education.
- Scanned copy of transcript of degree or certificate of secondary education.
- Scanned copy of B1 (CEFR) English Level.
- Motivation video explaining their interest in the programme and their career goals related to the Sustainable Blue Economy.

Online Application

The application process starts with a visit to the SEA-EU Joint Programmes website: <https://sea-eu.org/education/>



Applicant

Submission of Application

2

1

Call for Applications



Applicant

Appeals to provisional list of candidates

4

3

Anonymised publication of provisional list of candidates



Academic Steering Committee

Selection process

6

5

Anonymised publication of final list of candidates



Applicant

Appeals to provisional list of selected candidates

8

7

Anonymised publication of the provisional list of selected candidates



Applicant

Acceptance of selected candidates

10

9

Anonymised publication of the final list of students selected candidates

Time

Admission

As admitted student, you will receive the formal offer of admission to the programme electronically. This communication will provide detailed information regarding the enrolment procedures, deadlines, and any conditions or contingencies that must be fulfilled for acceptance.

Upon receiving the admission offer, you are required to formally accept it within the deadline communicated in the admission letter.

Enrolment

Academic requirements for enrolment

a) Legalisation is not required in the case of students whose documents were issued by countries in the European Union or members of the European Economic Area.

b) All other students must observe the following conditions:

- Documents issued in countries signatory to *The Hague Convention* of 5 October 1961 need only be stamped with the Apostille of The Hague by the relevant authorities in the country of issue.
- Documents issued in all other countries must be duly legalised. Legalisation services are provided by:
 - The Ministry of Education of the student's home country, for degree certificates and transcripts, and the relevant Ministry of the home country for birth certificates and certificates of nationality.
 - The Ministry of Foreign Affairs of the country in which the documents were issued.

**Official Translation of documents issued outside Europe. Diplomas and transcripts of records, and other official records, issued outside Europe should be officially translated into English by a Certified Translator.*

You have to register at the beginning of each academic year at UCA, as the Coordinating University of the SeaBluE Bachelor and as the Diploma issuing University.

To facilitate the process, UCA will make available to the host universities the personal and academic data of the students, so that it is not essential for the students

to carry out any administrative formalities.

However, the host university, as part of the registration process, may contact you to inform you about welcoming events, university rules and services, and possibly require you to sign a declaration that you have received the above-mentioned information.



Coursework Submission Procedures

Coursework should be submitted either on the common Moodle platform, or as requested by the lecturer or lecturing team. You are expected to work hard and diligently, completing and handing in any work to be assessed within the required deadlines. Late submission of work with no valid given reason will be graded with a fail. However, you may inform the lecturer, at least 10 days before the deadline, that there are

special circumstances that justify the late submission of an assignment. In this case, the lecturer may ask you to present a medical certificate or other type of document proving the alleged circumstance. This is at the discretion of the lecturer or lecturers concerned and you do not have the automatic right to an extension unless the lecturer explicitly tells you this request has been granted.

Re-sits & Re-assessments

The SeaBluE implementation approach represents an innovative framework to provide a cohesive and enriching educational experience. The model comprises two consecutive courses of two weeks each, followed by a week dedicated to the comprehensive assessment of both courses. A resit will provide students with the opportunity to be reassessed for a course they did not pass on their first attempt. This additional opportunity will allow the student to achieve a pass, ensuring that they meet the academic requirements of the course and can continue their studies.

Resits will be held at the end of the academic year to allow students time to prepare thoroughly and demonstrate their understanding of the course material. Students may retake failed courses in the next academic year, with a maximum of four assessment attempts in total (twice per academic year).

The unexcused nonattendance of an examination session shall in any event result in the loss of an examination attempt.



Re-registering

In the event that you have not passed all courses within the duration of the programme, you can apply for a new opportunity to finish your studies by writing to the Academic Steering Committee (ASC).

The ASC can authorise, or decide not to authorise, you to enter into the next cohort, to finish the courses that have not passed. You will have to re-register, paying tuition fees for the ECTS credits not passed.

Fees

Academic Year	Enrolment Fees
Y1	€1,500
Y2	€1,500
Y3	€1,500
(including: International Health Insurance, Student card,)	TOTAL = 4,500€

Scholarships

UCA: [Scholarships and Financial Aid](#)

UNIST: [Scholarships/ Ceepus](#)

UG: [Scholarships](#)

UM: [Scholarships](#)

UAlg: [Bolsas e Incentivos](#)

NORD: [Tuition fees for international students](#)

UPN: [Borse di Studio](#)



Discover

University of Algarve (Portugal)



Faro. The Capital of Algarve

Faro, the capital of Portugal's Algarve region, boasts a rich history shaped by various civilizations. Initially settled by the Phoenicians in the 4th century BC as Ossonoba, it later flourished under Roman rule. Conquered by the Moors in the 8th century, it was renamed Santa Maria Ibn Harun, becoming a vibrant cultural and commercial hub. Reclaimed by Portuguese King Afonso III in 1249, Faro evolved into an important administrative center. The city endured significant events, including a destructive sack by the English in 1596 and the 1755 Lisbon earthquake, leading to extensive rebuilding. Modernization in the 19th century and the establishment of the University of Algarve in 1979 marked its transformation into a key educational and tourist destination. Today, Faro is celebrated for its historical landmarks, scenic beauty, and vibrant cultural life.



The University

The University of Algarve (UAAlg) is the leading Higher Education institution in the South of Portugal. Recognized for the excellence of its research, the quality of its teaching and the close relations it establishes with society. It offers initial and postgraduate training courses in several training areas and has ample spaces, infrastructures and equipment that provide excellent conditions for study, work, research and socialization.

The UAAlg has been multiplying and consolidating its training offer in its three campuses, two in the city of Faro and one in Portimão, and offers undergraduate and integrated master's degrees, masters and doctorates, which are distributed in its major areas of training.

Scientific research has been a fundamental factor for the development of the University, placing it in a trajectory of national and international affirmation. The excellence of its research and development activities translates into a dense network of partnerships established with universities and R&D institutions from around the world in a wide range of fields.



4

Supporting Services

Visa & permit for Non-EU candidates

Green Travel

Accommodation

Health Insurance

SEA-EU Buddy System

Linguistic Support

Equal Opportunities

Diversity

Gender Equality

People with Disabilities

Psycho-pedagogical Help

Visa & Permit for Studies for Non-EU candidates

Before arrival: Visa Application

You as a non-EU student need to take into account the important visa considerations when joining SeaBluE and act upon them to ensure that you have the correct visas and permissions for undertaking all of the programme's periods of mobility.

You should research visa application requirements for all mobility periods and allow sufficient time to apply for each visa throughout the programme. In particular, self-funded students should be aware of the evidence of financial resources required for each application. The coordinating university will assist you by quickly providing the necessary admission documents for the visa application process.

Once you have been admitted to the Bachelor's programme, you should immediately contact the nearest embassy in your country to find out about the requirements for obtaining the student visa. The process can take up to 6 months to obtain a visa and you should ensure that your passport is valid for at least 3 years.

Some or all of the following documents will be requested by the embassy:

- Application form
- Letter of admission from the host university stating the studies to be undertaken and the relevant dates
- A document proving that the student will be able to support him/herself during the period of study.
- Full copy of the passport (valid for 3 years).
- Copy of insurance policy
- Health certificate
- Criminal record
- Passport size photographs
- Letter confirming accommodation
- Tax payment

Other relevant documents may be required from the relevant Embassy/Consulate in the country of residence.

**Visa issues are competence of national states, so the rules are not exactly the same in all EU countries. Please contact the SEA-EU office of the starting university if you have any doubt.*

On arrival: Application for Permit of Studies (Y1)

Once you have obtained a visa and arrived in the country to start the Bachelor's programme, the next step is to apply for a study permit for a maximum of one year. Information on how to apply is usually available on the official immigration or government website of the country where the programme is starting.

Ensure that the following steps are taken:

1. Meet all the requirements for a study permit. This may include maintaining full-time enrolment, having sufficient resources to support themselves and meeting any other conditions imposed by the immigration authorities.

2. Gather all the necessary documents to apply for a study permit. Common documents include:

- Application form
- Valid passport - full copy
- Letter of enrolment from your educational institution
- Proof of financial support
- Proof of health insurance
- Passport size photographs
- Proof of accommodation

3. Ask for an appointment at the nearest Immigration Office.

4. Submit the application. Make sure the application is complete and accurate to avoid delays.

5. Pay application fees. Pay any required application fees. Check the accepted payment methods and ensure you receive a receipt.

6. Wait for processing. Processing times for study permits vary. Be patient and wait for your application to be processed. You can check the status of your application on the immigration authorities' online portal or contact them for updates.

7. Collect your study permit. Once your study permit has been approved, follow the instructions to collect it. This may involve a return visit to the Immigration Office.



****IMPORTANT:** It is the responsibility of the student to ensure that visas are obtained in time to start the relevant mobility periods of the programme.

Mobility for the Y2/Y3. Renewal of the Permit for Studies

The renewal of the permit usually involves coordination between you, the host institution and the Foreign Office or relevant immigration authorities.

1. Check the expiry date of your permit. Plan to start the renewal process well before this date to avoid any legal issues.
2. Gather all necessary documents for the renewal. This may include an enrolment letter from the host institution, proof of financial means, proof of accommodation, and any other documents required by the immigration authorities.
3. Submit your application to the foreign office.
4. Receive the approval. Once your application has been processed, you will receive a decision from the Foreign Office.

Visa Support Offices at Partners Universities

UCA	Student Office
UALG	Student Office
UG	Student Office
UNIST	Student Office
UM	Student Office

Green Travel

Green mobility is an integral part of our identity, as our peripheral and coastal geography puts us in a unique position to embrace Europe from its shores, shaping our distinct identity and future trajectory. However, this advantage comes at a significant environmental cost.

Our dependence on air and coastal transport poses a clear threat to the environment, affecting ecosystems and contributing to pollution. Despite these challenges, we are committed to finding sustainable solutions that preserve our coastal heritage while minimising our ecological footprint.

To implement green mobility in SEA-EU joint programmes involving various European universities, several key aspects have been considered:

#Promoting Active Transportation

#Integrated Mobility Planning among countries/intercampus mobility

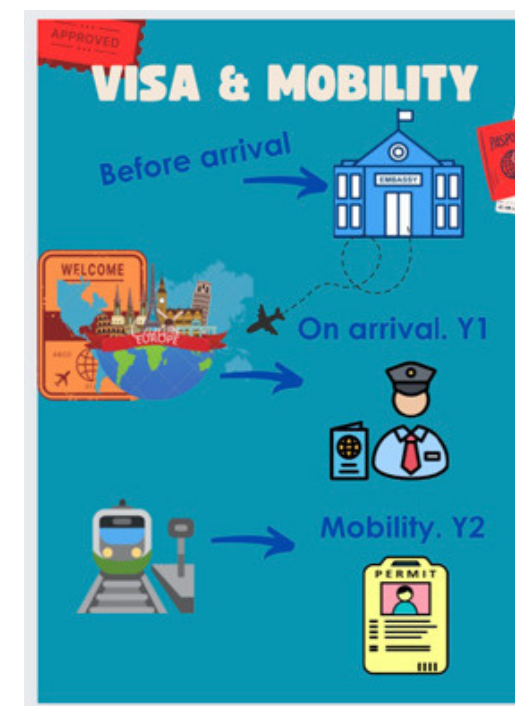
#Reducing Carbon Footprint

Look at the bright side: there is plenty of time to work on your dissertation, or your coursework, on the train!

In the Alliance we are very far from each other - spread all across the edges of the continent of Europe, so we know you'll have to take the plane sometimes. That's one of the reasons why as a student on this programme you won't have to move each and every semester. The planet needs open-minded mobile students, but it also needs less CO2 emissions.

We therefore encourage you, where possible, to limit the number of flights you take when travelling. To help you figure out different ways of getting from one place to another, visit the following websites:

- [Rome2Rio](#) - a website which will give a few realistic ways of travelling from place to place via rail.
- Or have a look at the [Network of Night Trains at Back On Track](#).



Did you know?
SEA-EU is highly concerned with sustainable transport!



Accommodation

Pursuing a Bachelor's degree is an exciting and challenging phase of academic and personal development. As you embark on this journey, finding suitable accommodation plays a crucial role in your overall experience and success. Your living environment significantly impacts your comfort, well-being, and academic performance. Therefore, understanding the importance of accommodation and making informed choices is essential.

A well-chosen accommodation can provide the necessary environment for focused study and research. It offers a quiet, comfortable space free from distractions, allowing you to concentrate on your coursework, projects, and thesis. Proximity to campus and libraries can also reduce commute times and increase your productive hours, facilitating better academic performance.

Accommodation often provides opportunities to connect with fellow students, forming a valuable support network. Living in close proximity to your peers enables you to share experiences, collaborate on projects, and develop lasting friendships. This sense of community can be particularly beneficial for international students, helping them to adapt to a new culture and environment.



Understanding the financial aspects of accommodation is essential for managing your budget effectively. Therefore, exploring different housing options and their associated costs will help you make an informed decision that aligns with your financial situation.

UCA: [Accommodation info](#)

UPN: [Accommodation info](#)

UG: [Student Housing info](#)

UALG: [Accommodation info](#)

UNIST: [Accommodation info](#)

NORD: [Accommodation info](#)

UM: [Accommodation info](#)

The programme provides you with insurance coverage for a two-year period, in compliance with the requirements for mobility among partner universities. You will receive a detailed insurance package once the enrolment process is completed.

If you are an EU student it is strongly recommended that you are in possession of a European Health Insurance Card. This free card gives access to medically necessary, state-provided healthcare during a temporary stay in any of the 27 EU countries. More information on the card and on how to obtain it is available [here](#).

If you are a Non-EU student, the cover will also include all worldwide travel.

Health Insurance

SEA-EU Buddy Programme



What is the objective of the SEA-EU buddy system?

To welcome you as new students and provide information about the university at the beginning of your stay at a SEA-EU institution. Furthermore, one of the objectives is to promote greater independence and autonomy in you with respect to university life as well as your study and learning. Buddies should ideally speak the language of the country so that they can help you in practical situations where you may need help in the local language e.g. going to the doctor.

The host university will launch a buddy system, in collaboration with the local SEA-EU student representative, in collaboration with the SEA-EU Office or local international offices will find students to buddy up with SEA-EU students, helping them to integrate seamlessly into the university community. It is a way for you to make friends, get to know new cultures and practice languages, and serve as a guide or contact for all SEA-EU students when they arrive at the host institution for their academic stay.

The purpose of the SEA-EU buddy system is to help you adapt to the new country and new university environment with the advice of their mentor students. All of the mentors have first-hand experience and, therefore, they know how difficult it can be to adapt to a new place and a new university.

SEA-EU Buddy System in more detail

Orientation Support

New students are paired with experienced students who can guide them during orientation activities, helping them become familiar with campus facilities, resources, and academic expectations.

Academic Assistance

Buddies may assist new students with understanding the course structure, selecting classes, and managing study schedules. They may also offer tips on effective study habits and time management.

Social Integration

Buddies help new students integrate into the university community by introducing them to social activities, clubs, and events. This can be particularly important for students who are new to the area or are international students, as in the case of SEA-EU students.

Answering Questions

New students often have numerous questions about university life, administrative processes, and campus resources. Buddies serve as a reliable source of information, answering questions and providing guidance.

Cultural Exchange

In the case of SEA-EU international students, the buddy system can facilitate cultural exchange, helping them adapt to a new academic and cultural environment. Buddies may also gain insights into different cultures through their interactions.

Emotional Support

The transition to university life can be challenging, and having a buddy provides a peer support system. Buddies may offer advice, lend a listening ear, and share their own experiences to help new students feel more comfortable and connected. The buddy system is an effective way to foster a sense of community, reduce feelings of isolation, and enhance the overall university experience for incoming students.





Discover

NORD University (Norway)



City of NORD

Welcome to Bodø – the city at 68 degrees north that offers cultural diversity, big city living, and a short distance to magnificent nature!

Bodø is a vibrant city that has a lot to offer you. In addition to diverse cultural experiences, Bodø is the perfect base for outdoor activities and exploration of Northern Norway. It is located on a peninsula in the middle of Nordland's beautiful coastline and is therefore perfect for those who want an active lifestyle. A wonderful sign posted trail network can be found nearby – suitable for hiking, cycling, and skiing. In addition, there are large sports halls and several gyms.

The cultural life in Bodø is flourishing and it might be hard to choose among everything the city has to offer. Stormen Concert Hall and Library have received a lot of international attention and have become very popular among the city's inhabitants. Other highlights include the Nordland Music Festival and the Parken Festival, which draw thousands of happy audience members every year.

If you prefer the outdoors and magnificent nature, you can pick and choose from the area's great coast and mountains. There are unlimited opportunities for those who like hiking, kayaking, mountain climbing, summit tours, mountain biking, and paragliding.

The University

The university has 11,000 students and 1,300 employees in study locations Bodø, Levanger, Steinkjer, Stjørdal, Mo i Rana, Nesna and Vesterålen.

Nord University is committed to delivering relevant educational programmes and research, with a focus on blue and green growth, innovation and entrepreneurship, and welfare, health and education. The university has leading research communities within aquaculture, biosciences, innovation and entrepreneurship.

Nord University has established collaborations with international partners around the globe. The university admits international students from around the world and supports a lively and diverse student community.



The average annual temperature in Bodø is around 4 degrees Celsius, however, this does not stop locals from leading an active, outdoor lifestyle! Go hiking, cross-country skiing, visit a Norwegian sauna, enjoy fishing, kayaking or cycling!

How to get here?

You can get to Bodø by plane (Bodø Airport - BOO). There are buses running around the city, and other cities can be reached by long-distance bus or train.

What do all SeaBluE universities have in common?

They're all situated by the sea, and English is the primary language everywhere. However, it's worthwhile to consider living abroad and taking a local language course to better acquaint yourself with your new surroundings.

The common language of the Bachelor's programme will be English. This includes, but is not limited to lectures, papers, projects and assessments.

To access the Bachelor, you will be asked to provide a certificate proving you have the required English language skills. The programme requires you to have a proven minimum of B1 level English according to the CEFR (if English isn't your mother tongue).

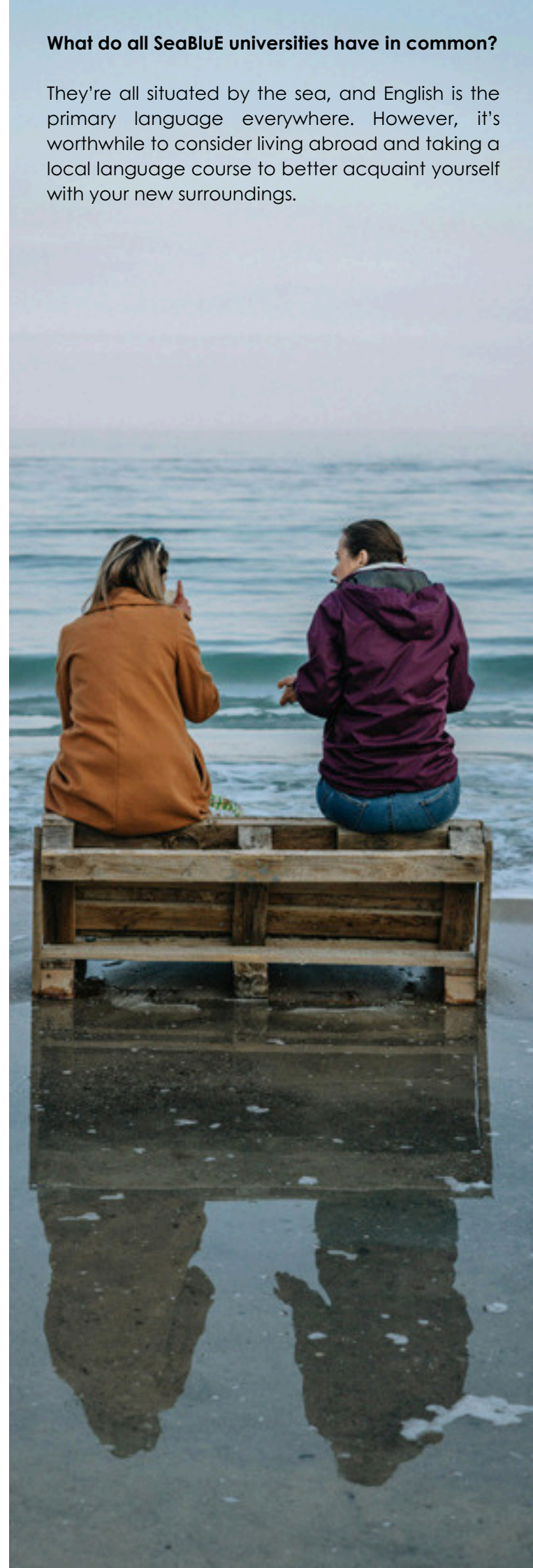
Applicants who hold a prior secondary education level or bachelor's degree awarded by an English-speaking programme from Australia, Canada, Ireland, New Zealand, United Kingdom or the USA, shall automatically be exempted from this language requirement.

Optionally, applicants can submit recommendation letters to further support their application.

This B1 level is required because students need to have a reasonable command of English in order to correctly follow the programme. Indeed, it is this that will guarantee your full ability to participate in, and benefit from the programme.

Proof of sufficient English proficiency

Accepted certificates are University of Cambridge Certificates, TOEFL, IELTS, ACLES, among others.



Linguistic Support

English Assistance for Students during the Programme

During the Bachelor's programme, the partner universities will provide you with assistance to secure the improvement of language and communication skills. This is supplementary to your programme of studies as language courses have not been added to this core programme.

This assistance will be organised as follows:

Language Centres: You will have access to the catalogue of in-person and online language courses offered at the Language Centres at the host Universities.

The SEA-EU partners will provide advance notice of these courses. They will include language training in English, as well as in the official or local language of the partner universities.

UCA



CSLM

UAlg



FCHS

UG



CJO

UNIST



International Office

UM



Language Courses

UPN



Student Services

NORD



Academic Services

Equal Opportunities

Indeed, as part of SEA-EU 2.0, an equality and diversity expert group is working at the Alliance level to mainstream gender equality in SEA-EU universities for staff and students as this is a priority for SEA-EU.

As a joint programme, we recognise that each individual is unique, with a particular personality, social background, networks and talents.

Whilst we celebrate diversity, we know that this may also pose challenges to students and staff alike. Indeed all Alliance members and universities of the consortium have mechanisms to ensure equal opportunities are in place. These are tasked with fighting for

equality in diversity on each and every campus and strive to foster structural changes in social dynamics. With seven international partner institutions and a joint programme which will be ready to run and to be advertised worldwide, an overt aim of our application is to further internationalise our universities by including students from our Alliance and elsewhere.

The Equal Opportunities Policy applied in the admissions process for this joint bachelor's degree encompasses a broad framework of principles and practices designed to promote fairness, inclusion and accessibility for all applicants.

This policy will ensure that candidates are assessed solely on merit, irrespective of factors such as ethnicity, gender, religion, disability or socio-economic background.

Furthermore, SeaBluE students will be studying how unequal opportunities have impacted the current management paradigm and will be exploring ways in which it needs to change.

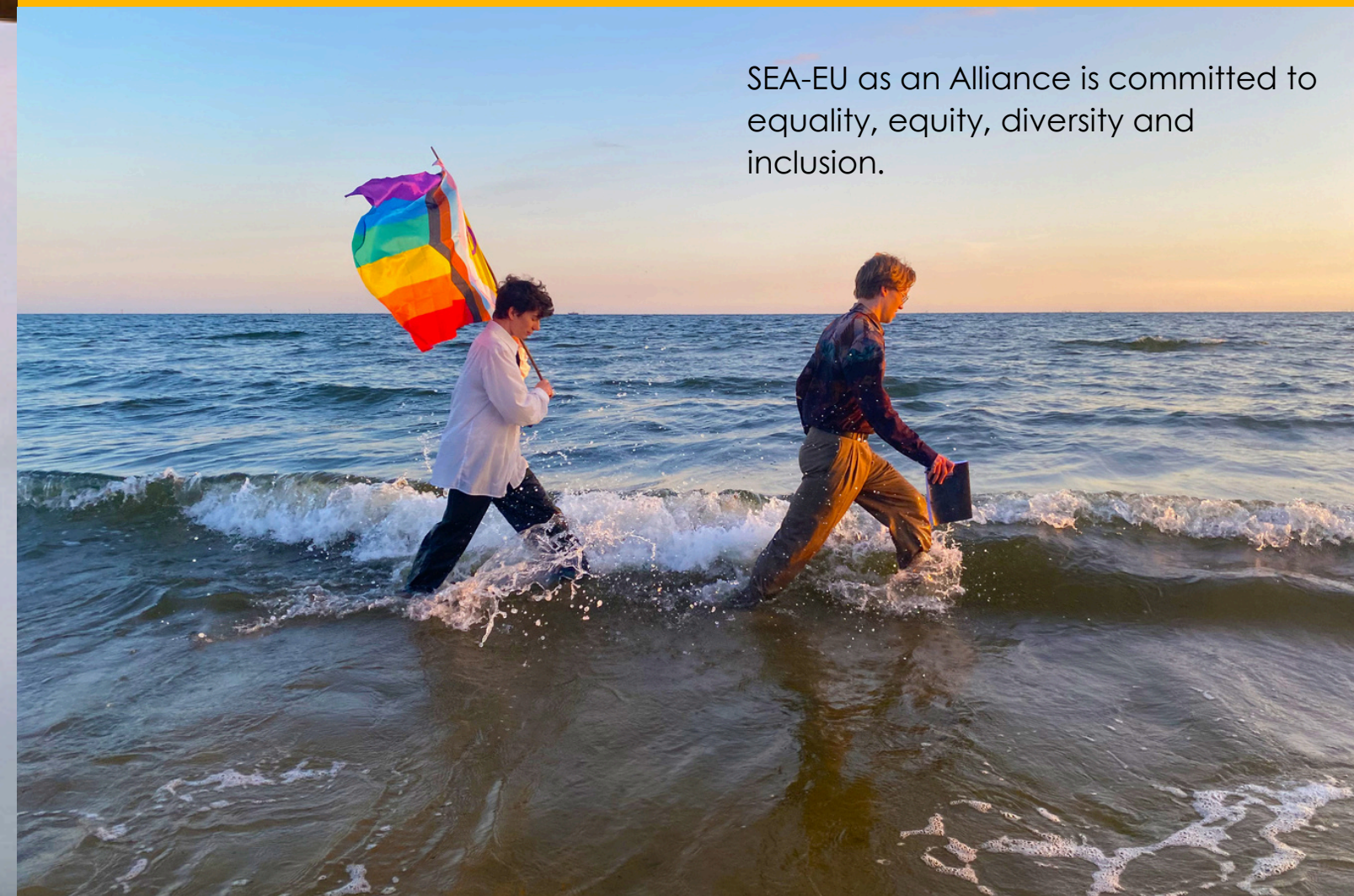
The Academic Steering Committee will be tasked with including an equality and diversity dimension to the Quality Assurance mechanisms put into place for the programme.

Diversity - Admissions Policy

We are committed to excellence in admissions and aim to provide a professional and fair service for you. We aim to select students who have the ability and motivation to benefit from the course they intend to follow and who will make a contribution to university life. We declare to treat each you fairly, regardless of:

- age and race;
- religion, faith;
- belief and non-belief;
- skin colour;
- nationality and ethnic origin;
- disability;
- sexual orientation;
- gender presentation;
- marital or parental status;
- pregnancy and Maternity;
- political belief;
- social or economic class.

SEA-EU as an Alliance is committed to equality, equity, diversity and inclusion.



Gender Equality

We are aware that gender gaps in education are a significant issue, affecting employment opportunities, economic growth, and overall health. Although Gender Equality is a core value of the EU, this matter should not only be a permanent commitment of all institutions, but it should also be a collective responsibility that we have as a society. More information can be found within each university's policy.

UCA: [Inclusión y Diversidad](#)

UPN: [CUG \(Single Guarantee Committee for equal opportunities\)](#)

UG: [Gender Equality Plan](#)

UALG: [Gender Equality Inclusivity Plan](#)

UNIST: [Gender Equality](#)

NORD: [Studentinord](#)

UM: [Gender+ Equity Plan \(G+EP\)](#)



People with Disabilities

SeaBluE is committed to ensuring equality of opportunity for its students ensuring that no one is unreasonably disadvantaged because of a disability.

All of the universities inside the consortium have an explicit policy of providing support for disabled students so that they can access the full range of academic, cultural and social activities the University offers.

Psycho-pedagogical Help

It is vital to know how to deal with you when you are in situations of risk or psychological crisis, therefore, the information and procedures provided by the universities will be easily accessible to you and the entire academic community.

UCA: [Servicio de Atención Psicológica y Psicopedagógica](#)

UPN: [Psychological Support Service](#)

UNIST: [Psychological Counselling](#)

UG: [Centrum Wsparcia Psychologicznego](#)

UM: [Mental Health Services - L-Università ta' Malta](#)

UALG: [Psycho-pedagogical Support Office \(GPAP\)](#)

NORD: [Studentinord](#)



Discover
University of Split
(Croatia)



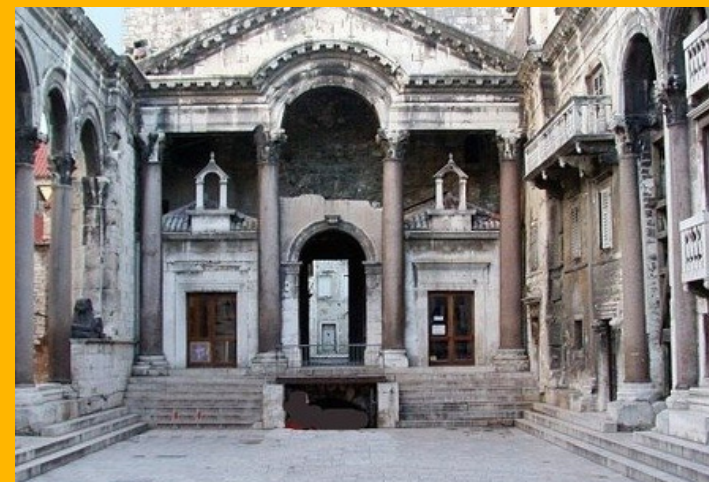
**Sveučilište
u Splitu**

Split. World Heritage Site

Split is the second-largest city in Croatia and home to extraordinary historical monuments, exquisite gastronomy and joyous people. Use the following link to walk through the streets of Split virtually.

The story of Split is already 17 centuries old, dating to the time when the Roman Emperor Diocletian decided to build his Palace right on the peninsula near the great Roman city of Salona, where he wanted to spend the last years of his life. During these 1700 years, the Palace has slowly turned into a city, which to this day lures visitors with its rich tradition, glorious history and beauty of its natural and cultural heritage.

Wherever the road leads you in Split, you will find excellent restaurants, traditional taverns, vibrant bars and flourishing nightlife. If you have enough time for an excursion, visit the area of Split, full of gems of natural and cultural heritage.



The University

The University of Split was officially established on 15 June 1974 when the units having already had an effect in their professional, scientific and teaching areas entered its structure. As a predominant scientific and teaching public institution in the region, the University of Split has expanded during the course of the past 45 years to include eleven Faculties, one Academy of Arts and four University Departments.



There are about 20,000 students enrolled in the University's undergraduate, graduate and postgraduate programmes. The focus of the research work carried out by the University is on scientific areas with reference to disciplines characterised by natural, biomedical, cultural, historical, social, economic and other features of the region as a part of the Croatian Adriatic and the Mediterranean region as a whole.





5

SEA-EU Academic Life

Welcome Week/Sessions
SEA-EU Campuses Facilities
SEA-EU Graduates
SEA-EU Ombudsperson

Welcome Week/ Sessions

The host universities undertake to organise welcome days for new students to get acquainted not only with the characteristics of the host city, but also with the variety of services offered by the respective university.

These events include campus tours, presentations of academic, administrative and support services, social gatherings and diverse activities that serve to provide practical guidance while fostering a welcoming atmosphere for a successful start to your academic activities.

Materials and Resources

The Consortium commits to providing SEA-EU joint programme students with access to all available facilities and resources, including those jointly developed within the SEA-EU European University framework and those offered by individual partner universities.

The SEA-EU universities hosting students have state-of-the-art classrooms equipped with the latest technology, ensuring an immersive and versatile learning experience. Students have the flexibility to attend both online and face-to-face courses, benefiting from a combination of virtual and on-campus teaching. In addition, these facilities prioritise accessibility, ensuring that classrooms are fully equipped to accommodate those with mobility disabilities, fostering an inclusive learning environment.



SEA-EU Campuses Facilities

This section provides an overview of the resources, infrastructure, and support services available at each partner institution to help you make the most of your academic experience. The SEA-EU Alliance brings together a range of universities, each offering specialised facilities to support your learning, research, and personal development throughout the programme.

Whether attending lectures, conducting research, or undertaking practical training, each institution offers distinct resources designed to enrich your learning. From state-of-the-art laboratories and simulation centres to libraries, collaborative workspaces, and dedicated student support services, this section will guide you through the facilities available at each university within the SEA-EU network.

As a joint programme, SeaBluE enables you to benefit from facilities across all partner institutions, fostering an environment of intercultural learning and hands-on engagement. Becoming familiar with these resources will equip you to make the most of each phase of your study journey.

We encourage you to explore, engage, and take full advantage of the diverse and comprehensive facilities offered by each SEA-EU partner institution.

UCA

UPN

UG

UAlg

NORD

UNIST

UM



SEA-EU Graduates

SEA-EU graduates and alumni hold significant relevance within the global maritime and academic sectors due to their unique educational backgrounds, international experiences, and commitment to sustainability and innovation. As products of the SEA-EU alliance, these individuals have received multidisciplinary education encompassing maritime sciences, environmental studies, engineering, humanities, and social sciences, equipping them with comprehensive knowledge and skills that are highly valued in various fields.

Their exposure to international environments and cultures through student exchanges and collaborative projects among the SEA-EU members, imbues them with a global perspective and intercultural competence, making them adaptable and effective in diverse, multinational contexts.

SEA-EU alumni benefit from robust professional networks that connect them with industry professionals, academic mentors, and fellow graduates, facilitating career development and fostering collaborative opportunities. This network, coupled with their access to cutting-edge research and continuing education programs, positions them as leaders and innovators capable of addressing complex global challenges.

Graduate Tracking

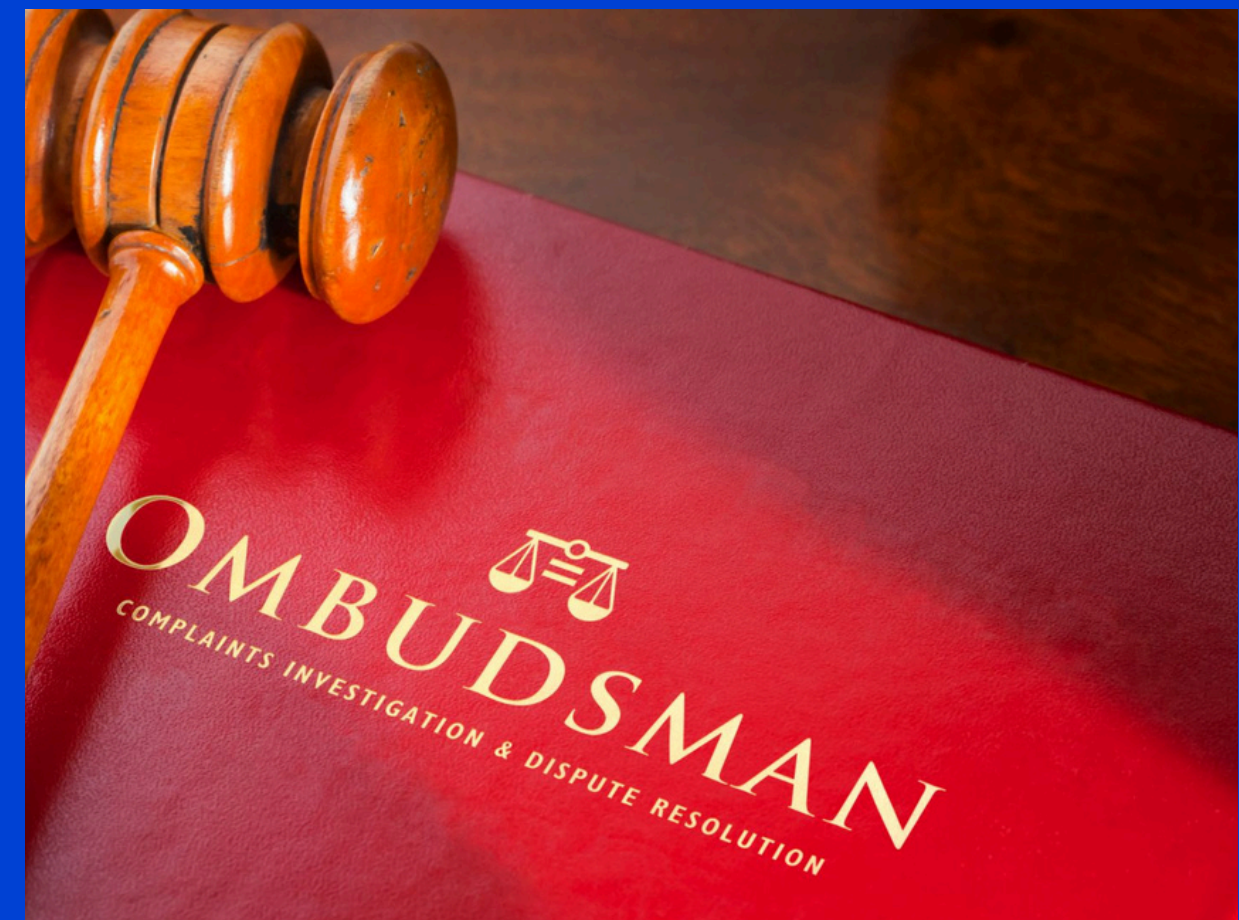
The implementation of graduate tracking within the SEA-EU Joint Programmes will be developed as it offers numerous benefits that can enhance the overall effectiveness and success of these programmes. This process will involve collecting and analysing data on various aspects of students after graduation, such as their career progress, further education, geographical location, professional achievements and contributions to their field or community.

The system will allow measuring programme outcomes, identifying areas for improvement and showcasing the success of graduates to strengthen partnerships with stakeholders. By building strong graduate networks, the joint programme will provide valuable networking, mentoring and job placement opportunities for current students. In addition, tracking graduates will identify potential donors and support resource development, contributing to financial sustainability.

Highlighting graduates' achievements enhances the reputation of the joint programme, attracting future students and increasing enrolments. Personalised professional services and ongoing engagement with graduates ensures continued support, while detailed tracking data helps to meet accreditation requirements and demonstrate the impact of the programme. Overall, graduate follow-up is essential for continuous improvement, community development, reputation enhancement and long-term sustainability.

The Ombudsperson in the SEA-EU alliance plays a pivotal role in fostering a fair, transparent, and supportive environment for students, staff, and faculty across the consortium's member universities. This independent and impartial figure is responsible for mediating conflicts, handling complaints, and advocating for the rights and interests of the community. By facilitating open communication, conducting thorough investigations, and providing confidential support, the Ombudsperson helps resolve disputes amicably and efficiently. Additionally, the Ombudsperson offers valuable insights and recommendations for policy improvements based on recurring issues and observed trends, contributing to the overall enhancement of SEA-EU's policies and procedures. Through these efforts, the Ombudsperson not only addresses individual concerns but also promotes trust, morale, and a sense of fairness within the SEA-EU alliance, aligning with its values of academic excellence, sustainability, and international collaboration.

SEA-EU Ombudsperson





Discover

University of Malta (Malta)



Malta. Heart of the Mediterranean Sea

Malta is a small island-state in the middle of the Mediterranean Sea. There are two official languages, Maltese and English, which will certainly help students to find their way in a new country.

Lying at the cross-roads of the Mediterranean, the University of Malta has been, over its 400-year history, the hub for international academic exchange on the island state. UM is the leading higher education institution in Malta and its structures are in line with the Bologna Process and the European Higher Education area.



How to get here?

Malta has very good transport connections and you can get to every corner of the island by bus, and in some cases also by ferry or boat. Malta has one airport: Malta International Airport (MLA).

The University

At UM, we carry out academic research and provide a vibrant higher education setting in the arts, sciences and the humanities as required for Malta's economic, social and cultural development. Our courses are designed to produce highly-qualified professionals in multiple disciplines. Our alumni community is growing exponentially: well over 3,500 students graduate in various disciplines annually.



We are committed to high standards of research and teaching and every member of staff at UM plays an important role and contributes to an outstanding student experience. Today UM is composed of fourteen faculties, a number of interdisciplinary institutes and centres, three schools and a junior college. Besides the main campus, situated at Msida, there are three other campuses: Valletta, Marsaxlokk, and in Xewkija, on the island of Gozo.

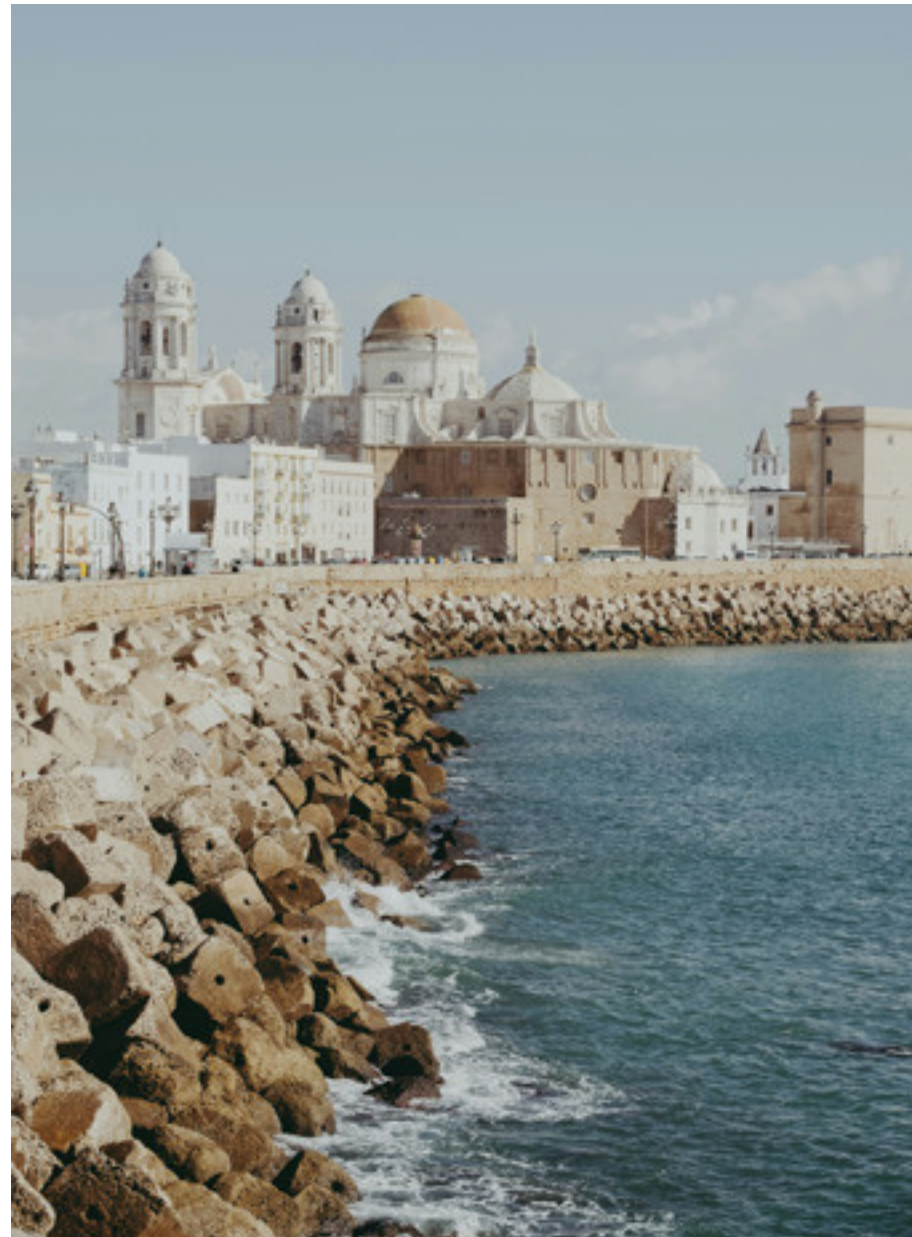




6

**Key Students
Contacts**

Key Students Contacts: **UCA, Spain**



Administrative Contact

Name: Carmen Lopez Valle
Email: jointprmanager@sea-eu.org
Office: Edificio Hospital Real, 102.
Cadiz.

Academic Contact

Name: María de Andrés García
Email: dg.titulosinternacionales@uca.es
Office: Edificio Hospital Real, 102.
Cadiz.

Key Students Contacts: **UPN, Italy**



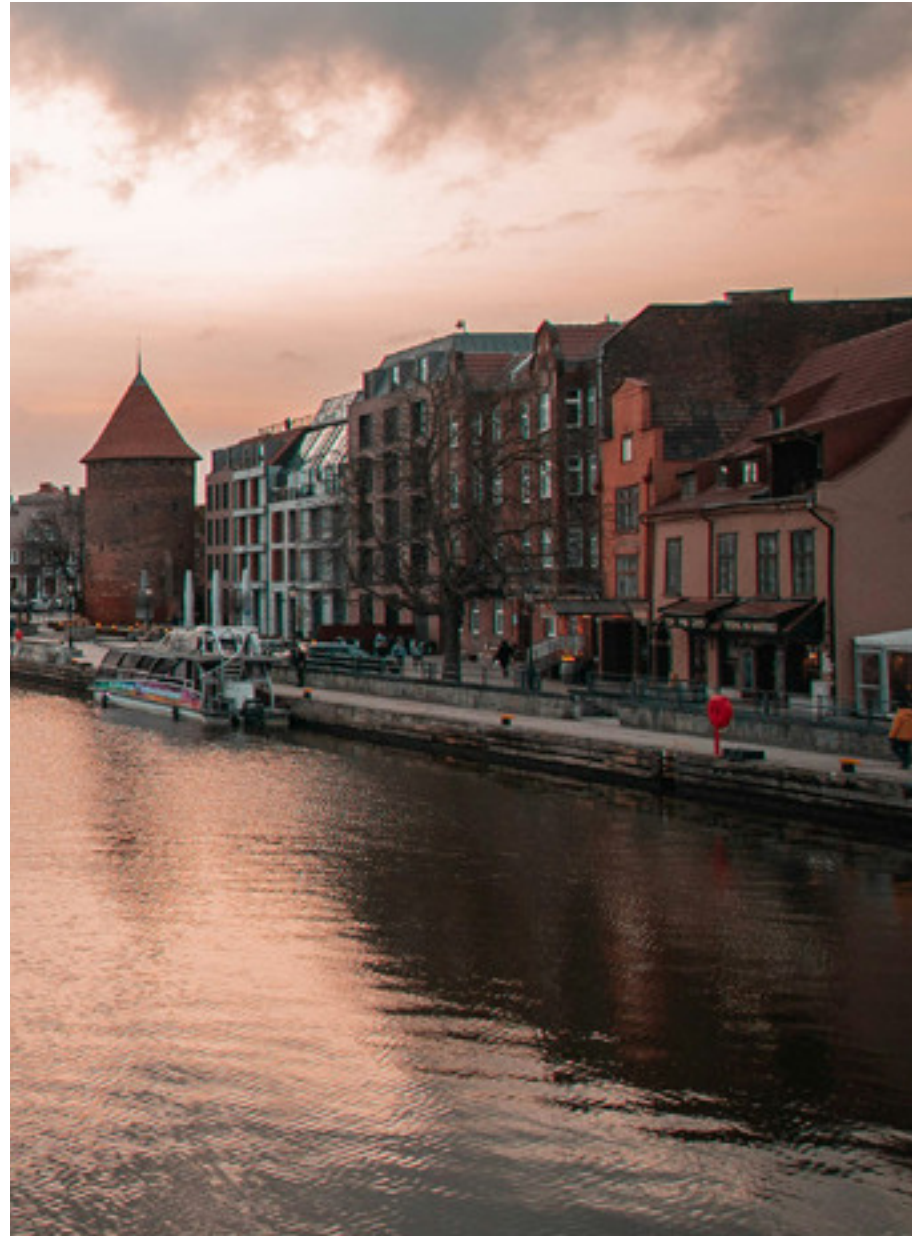
Administrative Contact

Name: Stefano Colacino
Email: stefano.colacino@uniparthenope.it
Telephone: +390815474150
Office: Palazzo Pacanowski, 431A

Academic Contact

Name: Cecilia Pasquinelli
Email: Cecilia.pasquinelli@uniparthenope.it
Office: DISAQ - Department of
Management and Quantitative Studies,
via G. Parisi, 13, Naples.

Key Students Contacts: UG, Poland



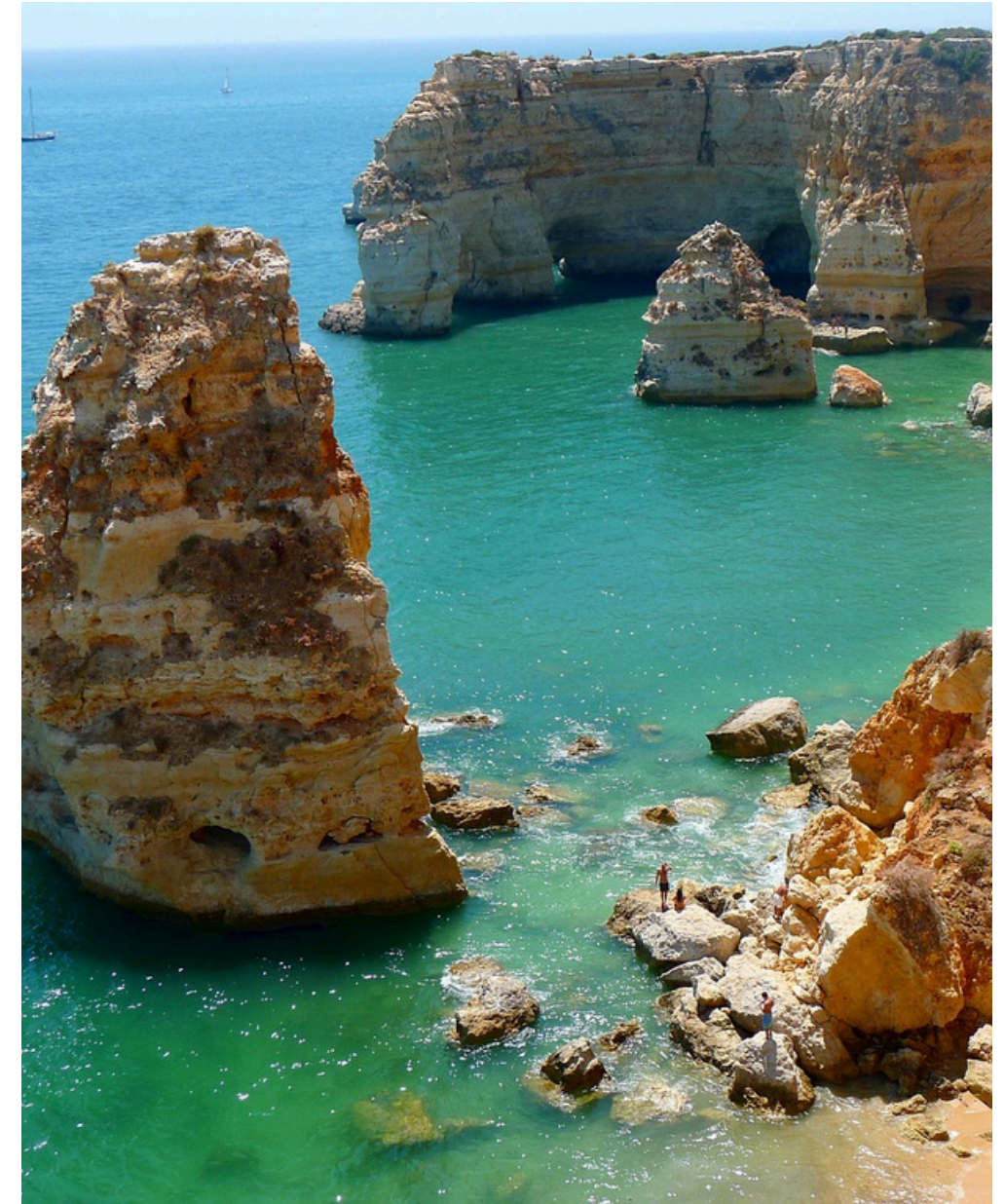
Administrative Contact

Name: Magdalena Dobrowolska
Email: magdalena.dobrowolska@ug.edu.pl
Telephone: +45 58 523 14 32
Office: Faculty of Management, Armii Krajowej 101, Sopot

Academic Contact

Name: Malgorzata Siemionek-Ruskań, Ph.D.
Email: malgorzata.siemionek-ruskan@ug.edu.pl
Telephone: +45 58 523 14 16
Office: Faculty of Management, Armii Krajowej 101, Sopot

Key Students Contacts: UALG, Portugal



Administrative Contact

Name: Marleni Azevedo
Email: international@ualg.pt
Telephone: +351 289 800 003
Office: International Relations and Mobility Office

Academic Contact

Academic Contact
Name: Isabel Simões
Email: dsa@ualg.pt
Telephone: +351 289 800 117
Office: Academic Services

Key Students Contacts: **NORD, Norway**



Administrative Contact

Name: International Office ,
Nord University
Email: international@nord.no
Telephone: 47 75 51 78 70

Academic Contact

Name: Galice Hoarau, Dolores Modic
Email: Galice.g.hoarau@nord.no,
dolores.modic@nord.no
Telephone: +47 7551 7497

Key Students Contacts: **UNIST, Croatia**



Administrative Contact

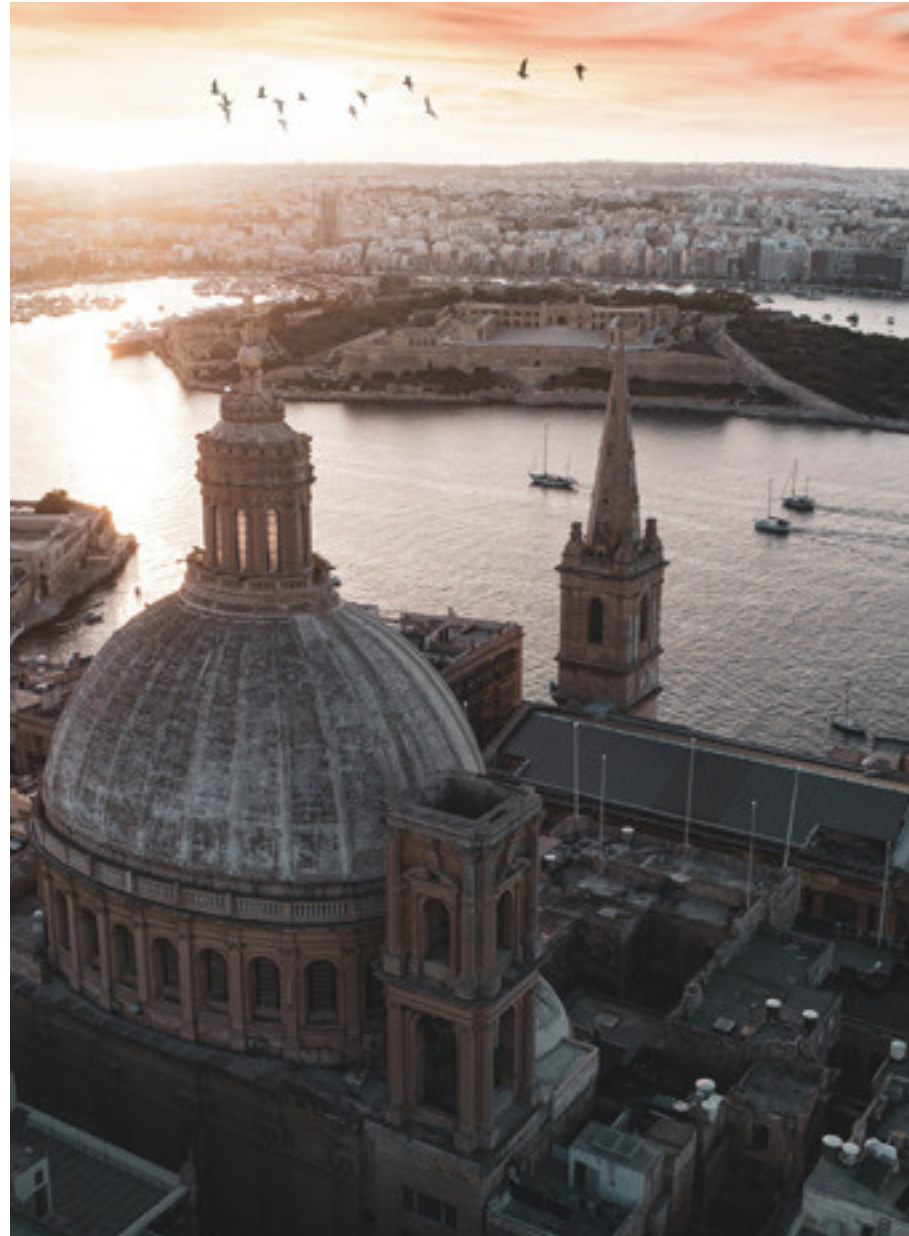
Name: Lada Reić
Email: lada@oss.unist.hr
Telephone: +385913344195

Academic Contact

Name: Goran Ćorluka
Email: gcorluka@oss.unist.hr
Telephone: +385 91 569 4348

Key Students Contacts:

UM, Malta



Administrative Contact

Name: Mr David Ramirez
Montaño
Email: david.ramirez@um.edu.mt
Telephone: +356 99728744
Office: Room 111, Maths & Physics
Building, University of Malta

Academic Contact

Name: Dr Adam Gauci
Email: adam.gauci@um.edu.mt
Telephone: +356 2340 2844
Office: Room 211A, Maths and
Physics Building, University of
Malta

Acknowledgments

The SeaBluE Consortium extends its deepest gratitude to the Academic Committee, whose expertise, guidance, and unwavering dedication were pivotal in the development of this joint programme. Their invaluable contributions have played a key role in ensuring the quality and rigor of the content.

We also wish to thank the Ports of the SEA-EU Alliance, which we had the privilege of visiting throughout this project. Their openness and hospitality provided critical real-world insights that greatly enriched the creation of this manual.

Our sincere thanks also go to the companies that generously shared data and information, offering their support selflessly. Their collaboration was crucial in ensuring the accuracy and relevance of the material.

This manual represents the collective efforts of many, and we deeply appreciate the time, expertise, and resources contributed by everyone involved.

Credits

This handbook has been made possible thanks to the collaborative efforts of numerous contributors, specially UM. We would like to extend our gratitude to all individuals and organizations who contributed to its development.

We also wish to acknowledge the use of royalty-free images sourced from various websites. These images were crucial in enhancing the visual quality of this handbook. Special thanks to the following websites and photographers:

- Images provided by Jesús Fernández García, via Flickr (<https://www.flickr.com/photos/jfgcadiz/albums/>)
- Images from FreePik.es licensed under free licence for commercial use (<https://www.freepik.es/>)

We would like to express our heartfelt gratitude to all the participants of the **Photocontest SEA-EU 2024**. Thanks to your talent and dedication, we have received images that beautifully capture the essence of the sea, culture, and sustainability.

sea·EU | SeaBlue